

# **TWO-SPRING NOZZLE HOLDER**

## **STAMPING & TYPE REFERENCE**

**·ZEXEL·**

1. Nozzle holder stamping

Example:

571 41-4130

Nozzle holder stamping

Date of manufacture

The last six figures of the nozzle holder part number are stamped on the nozzle holder body.

Example:

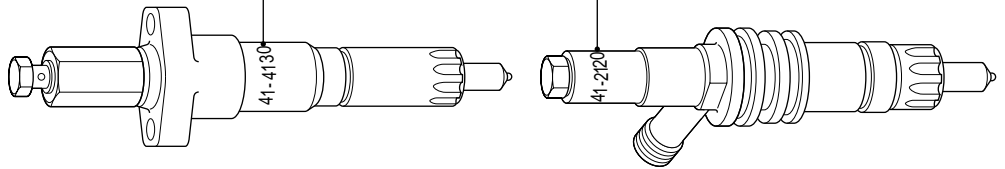
Nozzle holder stamping → Nozzle holder part number

4 1 - 4 1 3 0

1 0 5 0 4 1 - 4 1 3 0

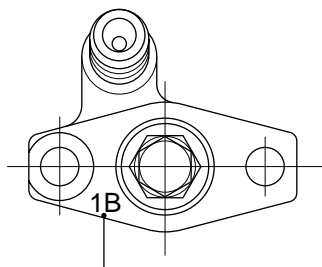
Nozzle holder stamping

Nozzle holder stamping

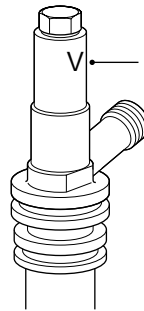


2. Discrimination mark

- (1) Some types of nozzle holders have a discrimination mark.
- (2) The discrimination mark is stamped on the nozzle holder flange or the nozzle holder body. (When stamped on the nozzle holder body, the discrimination mark may either follow the nozzle holder stamping or be stamped in a separate location.)

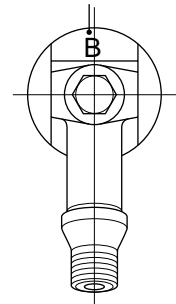


Discrimination mark



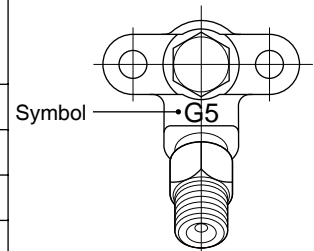
Discrimination mark

Discrimination mark



- (3) On nozzle holders for Honda, the part numbers below have the discrimination mark following the nozzle holder stamping. On the flange is stamped the engine type symbol, as required by the manufacturer.

Nozzle holder assembly part no.	Nozzle holder stamping	Discrimination mark	Symbol
105118-7070	48-2080	A	G5
105118-7071	48-2081	A	G5
105118-7190	48-2081	Q	J7
105118-7270	48-2081	T	G5



Symbol

3. Nozzle holder assembly part number

The nozzle holder assembly part number is determined by the combination of the nozzle holder stamping and the discrimination mark.

Example:

Nozzle holder stamping	Discrimination mark	Nozzle holder assembly part no.
48-2080	A	105118-7070
48-2081	A	105118-7071
48-2081	Q	105118-7190
48-2081	T	105118-7270

## STAMPING & TYPE REFERENCE

Stamping mark	Discrimination mark	Nozzle holder part no.	Nozzle & nozzle holder assembly no.*	Nozzle part no. (Stamping mark)	Nozzle service kit no. <sup>1</sup>	Nozzle holder type
30-3170	-	105030-3170	105100-7250 [1-15300-164-0]	105015-6820 (NP-DLLA150SN682)	-	KBL2.1-S
30-3170	A	105030-3170	105100-7280 [1-15300-191-0]	105015-6950 (NP-DLLA150SN695)	-	KBL2.1-S
30-3230	-	105030-3230	105100-7620 [1-15300-227-0]	105015-7710 (NP-DLLA156SN771)	-	KBL2.1-S
30-3230	C	105030-3230	105101-7460 [1-15300-307-0]	105015-9140 (NP-DLLA149SN914)	-	KBL2.1-S
30-3230	C	105030-3230	105101-7461 [1-15300-307-1]	105015-9140 (NP-DLLA149SN914)	-	KBL2.1-S
30-3230	M	105030-3230	105101-7462 [1-15300-307-2]	105015-9140 (NP-DLLA149SN914)	-	KBL2.1-S
30-3231	2G	105030-3231	105100-7281 [1-15300-191-1]	105015-6950 (NP-DLLA150SN695)	-	KBL2.1-S
30-3231	2M	105030-3231	105100-7621 [1-15300-227-1]	105015-7710 (NP-DLLA156SN771)	-	KBL2.1-S
30-3231	M	105030-3231	105101-7463 [1-15300-307-3]	105015-9140 (NP-DLLA149SN914)	-	KBL2.1-S
30-3300	-	105030-3300	105101-7050 [1-15300-259-0]	105015-8610 (NP-DLLA154SN861)	-	KBL2.1-S
30-3301	H	105030-3301	105101-7051 [1-15300-259-1]	105015-8610 (NP-DLLA154SN861)	-	KBL2.1-S
30-3320	-	105030-3320	105101-7080 [23600-2210A]		105019-0020	KBL2.3-S
30-3330	-	105030-3330	105101-7081 [23600-2211A]		105019-0020	KBL2.3-S
30-3330	Y	105030-3330	105101-7342 [23600-2391B]		105019-0130	KBL2.3-S
30-3340	-	105030-3340	105101-7180 [23600-2250A]	105015-8710 (NP-DLLA150SN871)	-	KBL2.3-S
30-3340	-	105030-3340	105101-7181 [23600-2251A]		105019-0040	KBL2.3-S
30-3340	T	105030-3340	105101-7360 [23600-2410A]		105019-0120	KBL2.3-S
30-3370	-	105030-3370	105101-7220 [23600-2280A]		105019-0060	KBL2.3-S
30-3370	A	105030-3370	105101-7221 [23600-2281A]		105019-0060	KBL2.3-S
30-3400	-	105030-3400	105101-7260 [23600-2310A]		105019-0040	KBL2.3-S
30-3401	-	105030-3401	105101-7261 [23600-2310B]		105019-0040	KBL2.3-S
30-3402	-	105030-3402	105101-7262 [23600-2311A]		105019-0040	KBL2.3-S
30-3420	2E	105030-3420	105101-7291 [ME076742]		105019-0080	KBL2.3-S
30-3450	-	105030-3450	105101-7340 [23600-2390A]		105019-0130	KBL2.3-S
30-3451	A	105030-3451	105101-7341 [23600-2391A]		105019-0130	KBL2.3-S
30-3460	-	105030-3460	105101-7380 [1-15300-285-0]	105015-9080 (NP-DLLA156SN908)	-	KBL2.1-S
30-3460	A	105030-3460	105101-7440 [1-15300-295-0]	105015-9190 (NP-DLLA156SN919)	-	KBL2.1-S
30-3461	-	105030-3461	105101-7381 [1-15300-285-1]	105015-9080 (NP-DLLA156SN908)	-	KBL2.1-S

Note: \* The number in brackets [ ] is the manufacturer's part number.

1. Use the nozzle service kit for nozzle replacement of KBL2.3-S, KBL2.4-S and KBL2.4-P type nozzle holders.  
Never replace only the nozzle itself of these types.

# STAMPING & TYPE REFERENCE

Stamping mark	Discrimination mark	Nozzle holder part no.	Nozzle & nozzle holder assembly no.*	Nozzle part no. (Stamping mark)	Nozzle service kit no. <sup>1</sup>	Nozzle holder type
30-3461	A	105030-3461	105101-7441 [1-15300-295-1]	105015-9190 (NP-DLLA156SN919)	-	KBL2.1-S
30-3462	A	105030-3462	105101-7442 [1-15300-351-0]	105015-9190 (NP-DLLA156SN919)	-	KBL2.1-S
30-3470	-	105030-3470	105101-7320 [23600-2440A]		105019-0090	KBL2.3-S
30-3470	C	105030-3470	105101-7450 [23600-2480A]		105019-0171	KBL2.3-S
30-3471	C	105030-3471	105101-7451 [23600-2480B]		105019-0171	KBL2.3-S
30-3472	C	105030-3472	105101-7452 [23600-2480C]		105019-0171	KBL2.3-S
30-3473	A	105030-3473	105101-7454 [23600-2480D]		105019-0171	KBL2.3-S
30-3473	C	105030-3473	105101-7453 [23600-2480D]		105019-0171	KBL2.3-S
30-3474	A	105030-3474	105101-7455 [23600-2480E]		105019-0171	KBL2.3-S
30-3480	B	105030-3480	105101-7182 [23600-2251B]		105019-0040	KBL2.3-S
30-3481	-	105030-3481	105101-7362 [23600-2412A]		105019-0160	KBL2.3-S
30-3481	F	105030-3481	105101-7263 [23600-2311A]		105019-0040	KBL2.3-S
30-3481	L	105030-3481	105101-7363 [23600-2412B]		105019-0160	KBL2.3-S
30-3481	L	105030-3481	105101-7364 [23600-2412C]		105019-0160	KBL2.3-S
30-3482	241	105030-3482	105101-7366 [23600-2412E]		105019-0161	KBL2.3-S
30-3482	B	105030-3482	105101-7183 [23600-2252A]		105019-0040	KBL2.3-S
30-3482	L	105030-3482	105101-7365 [23600-2412D]		105019-0161	KBL2.3-S
30-3500	-	105030-3500	105101-7470 [23600-2510A]		105019-0180	KBL2.3-S
30-3510	-	105030-3510	105101-7500 [23600-2540A]		105019-0200	KBL2.3-S
30-3511	-	105030-3511	105101-7501 [23600-2540B]		105019-0200	KBL2.3-S
30-3530	-	105030-3530	105101-7580 [23600-2610A]		105019-0260	KBL2.3-S
30-3530	C	105030-3530	105101-7880 [23600-2770A]		105019-0440	KBL2.3-S
30-3530	K	105030-3530	105101-7881 [23600-2770B]		105019-0440	KBL2.3-S
30-3530	M	105030-3530	105101-7581 [23600-2610B]		105019-0260	KBL2.3-S
30-3531	289	105030-3531	105101-8071 [23600-2890B]		105019-0670	KBL2.3-S
30-3531	308	105030-3531	105101-8181 [23600-3080B]		105019-0980	KBL2.3-S
30-3531	314	105030-3531	105101-8311 [23600-3140B]		105019-2040	KBL2.3-S
30-3531	315	105030-3531	105101-8321 [23600-3150B]		105019-2050	KBL2.3-S

Note: \* The number in brackets [ ] is the manufacturer's part number.

1. Use the nozzle service kit for nozzle replacement of KBL2.3-S, KBL2.4-S and KBL2.4-P type nozzle holders.  
Never replace only the nozzle itself of these types.

## STAMPING & TYPE REFERENCE

Stamping mark	Discrimination mark	Nozzle holder part no.	Nozzle & nozzle holder assembly no.*	Nozzle part no. (Stamping mark)	Nozzle service kit no. <sup>1</sup>	Nozzle holder type
30-3531	335	105030-3531	105101-8541 [23600-3350B]		105019-2460	KBL2.3-S
30-3531	336	105030-3531	105101-8551 [23600-3360B]		105019-2470	KBL2.3-S
30-3531	50	105030-3531	105101-8410 [23600-3250A]		105019-2160	KBL2.3-S
30-3531	80	105030-3531	105101-8180 [23600-3080A]		105019-0980	KBL2.3-S
30-3531	A	105030-3531	105101-8540 [23600-3350A]		105019-2460	KBL2.3-S
30-3531	B	105030-3531	105101-8550 [23600-3360A]		105019-2470	KBL2.3-S
30-3531	H	105030-3531	105101-8091 [23600-2882A]		105019-0990	KBL2.3-S
30-3531	K	105030-3531	105101-7882 [23600-2770B]		105019-0440	KBL2.3-S
30-3531	M	105030-3531	105101-7582 [23600-2610B]		105019-0260	KBL2.3-S
30-3531	P	105030-3531	105101-8310 [23600-3140A]		105019-2040	KBL2.3-S
30-3531	T	105030-3531	105101-8320 [23600-3150A]		105019-2050	KBL2.3-S
30-3531	Z	105030-3531	105101-8070 [23600-2890A]		105019-0670	KBL2.3-S
30-3540	E	105030-3540	105101-8440 [1-15300-373-0]	105025-2130 (NP-DLLA156SM213)	-	KBL2.1-S
30-3540	G	105030-3540	105101-8390 [1-15300-368-0]	105025-2000 (NP-DLLA156SM200)	-	KBL2.1-S
30-3540	R	105030-3540	105101-7620 [1-15300-314-0]	105015-9720 (NP-DLLA154SN972)	-	KBL2.1-S
30-3540	U	105030-3540	105101-7750 [1-15300-328-0]	105025-0090 (NP-DLLA154SM009)	-	KBL2.1-S
30-3570	-	105030-3570	105101-7700 [23600-2660A]		105019-0310	KBL2.3-S
30-3570	F	105030-3570	105101-7702 [23600-2662A]		105019-0312	KBL2.3-S
30-3570	H	105030-3570	105101-7701 [23600-2661A]		105019-0311	KBL2.3-S
30-3580	-	105030-3580	105101-7790 [23600-2740A]		105019-0540	KBL2.3-S
30-3580	A	105030-3580	105101-7791 [23600-2741A]		105019-0541	KBL2.3-S
30-3580	J	105030-3580	105101-7792 [23600-2741B]		105019-0541	KBL2.3-S
30-3581	J	105030-3581	105101-7793 [23600-2741B]		105019-0541	KBL2.3-S
30-3581	J	105030-3581	105101-8350 [23600-2742A]		105019-2070	KBL2.3-S
30-3581	T	105030-3581	105101-8130 [23600-2910A]		105019-0720	KBL2.3-S
30-3590	-	105030-3590	105101-7800 [23600-2750A]		105019-0550	KBL2.3-S
30-3590	C	105030-3590	105101-7801 [23600-2750A]		105019-0550	KBL2.3-S
30-3591	C	105030-3591	105101-7802 [23600-2750A]		105019-0550	KBL2.3-S

Note: \* The number in brackets [ ] is the manufacturer's part number.

1. Use the nozzle service kit for nozzle replacement of KBL2.3-S, KBL2.4-S and KBL2.4-P type nozzle holders.  
Never replace only the nozzle itself of these types.

# STAMPING & TYPE REFERENCE

Stamping mark	Discrimination mark	Nozzle holder part no.	Nozzle & nozzle holder assembly no.*	Nozzle part no. (Stamping mark)	Nozzle service kit no. <sup>1</sup>	Nozzle holder type
30-3600	-	105030-3600	105101-7703 [23600-2663A]		105019-0313	KBL2.3-S
30-3600	A	105030-3600	105101-7704 [23600-2663B]		105019-0314	KBL2.3-S
30-3601	-	105030-3601	105101-7705 [23600-2663C]		105019-0314	KBL2.3-S
30-3601	A	105030-3601	105101-7950 [23600-2840A]		105019-0610	KBL2.3-S
30-3610	-	105030-3610	105101-7890 [23600-2780A]		105019-0390	KBL2.3-S
30-3611	E	105030-3611	105101-7891 [23600-2781A]		105019-0391	KBL2.3-S
30-3612	306	105030-3612	105101-8261 [23600-3060B]		105019-0930	KBL2.3-S
30-3612	E	105030-3612	105101-7892 [23600-2781A]		105019-0391	KBL2.3-S
30-3612	L1	105030-3612	105101-8260 [23600-3060A]		105019-0930	KBL2.3-S
30-3620	B	105030-3620	105101-7502 [23600-2540B]		105019-0200	KBL2.3-S
30-3620	D	105030-3620	105101-7940 [23600-2810A]		105019-0580	KBL2.3-S
30-3620	D	105030-3620	105101-7941 [23600-2810A]		105019-0580	KBL2.3-S
30-3630	D	105030-3630	105101-7942 [23600-2811A]		105019-0580	KBL2.3-S
30-3631	B	105030-3631	105101-8340 [23600-3190A]		105019-2030	KBL2.3-S
30-3631	D	105030-3631	105101-7943 [23600-2811A]		105019-0580	KBL2.3-S
30-3670	296	105030-3670	105101-8143 [23600-2962B]		105019-0940	KBL2.3-S
30-3670	A2	105030-3670	105101-8140 [23600-2960A]		105019-0730	KBL2.3-S
30-3670	A3	105030-3670	105101-8141 [23600-2961A]		105019-0731	KBL2.3-S
30-3670	A4	105030-3670	105101-8142 [23600-2962A]		105019-0940	KBL2.3-S
30-3670	E	105030-3670	105101-8190 [23600-2990A]		105019-0840	KBL2.3-S
30-3670	E1	105030-3670	105101-8191 [23600-2991A]		105019-0850	KBL2.3-S
30-3700	-	105030-3700	105101-8160 [23600-2980A]		105019-0810	KBL2.3-S
30-3700	A	105030-3700	105101-8370 [23600-3220A]		105019-2120	KBL2.3-S
30-3700	BA	105030-3700	105101-8380 [23600-3230A]		105019-2130	KBL2.3-S
30-3700	C	105030-3700	105101-8420 [23600-3221A]		105019-2170	KBL2.3-S
30-3700	E	105030-3700	105101-8381 [23600-3231A]		105019-2130	KBL2.3-S
30-3700	F	105030-3700	105101-8421 [23600-3222A]		105019-2170	KBL2.3-S
30-3700	F	105030-3700	105101-8422 [23600-3222B]		105019-2170	KBL2.3-S

Note: \* The number in brackets [ ] is the manufacturer's part number.

1. Use the nozzle service kit for nozzle replacement of KBL2.3-S, KBL2.4-S and KBL2.4-P type nozzle holders.  
Never replace only the nozzle itself of these types.

## STAMPING & TYPE REFERENCE

Stamping mark	Discrimination mark	Nozzle holder part no.	Nozzle & nozzle holder assembly no.*	Nozzle part no. (Stamping mark)	Nozzle service kit no. <sup>1</sup>	Nozzle holder type
30-3700	G	105030-3700	105101-8470 [23600-3290A]		105019-2260	KBL2.3-S
30-3700	H	105030-3700	105101-8382 [23600-3232A]		105019-2131	KBL2.3-S
30-3700	J	105030-3700	105101-8383 [23600-3233A]		105019-2132	KBL2.3-S
30-3700	J	105030-3700	105101-8384 [23600-3233B]		105019-2132	KBL2.3-S
30-3700	K	105030-3700	105101-8600 [23600-3410A]		105019-2610	KBL2.3-S
30-3700	L	105030-3700	105101-8670 [23600-3580A]		105019-2860	KBL2.3-S
30-3700	N	105030-3700	105101-8671 [23600-3581A]		105019-2861	KBL2.3-S
30-3700	P	105030-3700	105101-8601 [23600-3411A]		105019-2611	KBL2.3-S
30-3710	-	105030-3710	105101-8210 [23600-3000A]		105019-0850	KBL2.3-S
30-3711	218	105030-3711	105101-8481 [23600-2181B]		105019-2270	KBL2.3-S
30-3711	218	105030-3711	105101-8580 [23600-2181C]		105019-2580	KBL2.3-S
30-3711	3	105030-3711	105101-8480 [23600-2181A]		105019-2270	KBL2.3-S
30-3711	300	105030-3711	105101-8212 [23600-3001B]		105019-0850	KBL2.3-S
30-3711	344	105030-3711	105101-8630 [23600-3440A]		105019-2740	KBL2.3-S
30-3711	361	105030-3711	105101-8690 [23600-3610A]		105019-2890	KBL2.3-S
30-3711	K	105030-3711	105101-8211 [23600-3001A]		105019-0850	KBL2.3-S
30-3720	-	105030-3720	105101-8230 [23600-3030A]		105019-0870	KBL2.3-S
30-3720	J	105030-3720	105101-8360 [23600-3031A]		105019-2060	KBL2.3-S
30-3730	2	105030-3730	105101-8560 [23600-3341A]		105019-2500	KBL2.3-S
30-3730	2	105030-3730	105101-8561 [23600-3342A]		105019-2500	KBL2.3-S
30-3730	C	105030-3730	105101-8240 [23600-3040A]		105019-0880	KBL2.3-S
30-3740	D	105030-3740	105101-8400 [23600-3160A]		105019-2140	KBL2.3-S
30-3750	327	105030-3750	105101-8451 [23600-3270B]		105019-2220	KBL2.3-S
30-3750	Z	105030-3750	105101-8450 [23600-3270A]		105019-2220	KBL2.3-S
30-3760	-	105030-3760	105101-8570 [23600-3380A]		105019-2520	KBL2.3-S
30-3760	A	105030-3760	105101-8711 [23600-3621A]		105019-2930	KBL2.3-S
30-3790	-	105030-3790	105101-8640 [23600-3500A]		105019-2770	KBL2.3-S
30-3800	-	105030-3800	105101-8710 [23600-3620A]		105019-2930	KBL2.3-S

Note: \* The number in brackets [ ] is the manufacturer's part number.

1. Use the nozzle service kit for nozzle replacement of KBL2.3-S, KBL2.4-S and KBL2.4-P type nozzle holders.  
Never replace only the nozzle itself of these types.

# STAMPING & TYPE REFERENCE

Stamping mark	Discrimination mark	Nozzle holder part no.	Nozzle & nozzle holder assembly no.*	Nozzle part no. (Stamping mark)	Nozzle service kit no. <sup>1</sup>	Nozzle holder type
30-4040	-	105030-4040	105100-7390 [23600-1840A]	105015-7150 (NP-DLLA160SN715)	-	KBL2.1-S
30-4041	-	105030-4041	105100-7391 [23600-1841A]	105015-7200 (NP-DLLA160SN720)	-	KBL2.1-S
30-4080	BB	105030-4080	105100-7400 [ME6H6029]	105015-6710 (NP-DLLA160SN671)	-	KBL2.1-S
30-4090	G3	105030-4090	105100-7410 [16600 Z0002]	105015-7240 (NP-DLLA149SN724)	-	KBL2.1-S
30-4090	G4	105030-4090	105100-7560 [16600 Z0003]	105015-7560 (NP-DLLA148SN756)	-	KBL2.1-S
30-4110	C	105030-4110	105100-7760 [ME076465]	105015-6170 (NP-DLLA157SN617)	-	KBL2.1-S
30-4110	G	105030-4110	105100-7550 [ME076205]	105015-7550 (NP-DLLA155SN755)	-	KBL2.1-S
30-4110	K	105030-4110	105100-7510 [ME076087]	105015-7440 (NP-DLLA160SN744)	-	KBL2.1-S
30-4110	L	105030-4110	105100-7520 [ME076088]	105015-7450 (NP-DLLA155SN745)	-	KBL2.1-S
30-4110	T	105030-4110	105100-7580 [ME076089]	105015-7610 (NP-DLLA150SN761)	-	KBL2.1-S
30-4110	V	105030-4110	105100-7420 [ME047446]	105015-7230 (NP-DLLA150SN723)	-	KBL2.1-S
30-4120	-	105030-4120	105100-7361 [23600-1821A]	105015-7270 (NP-DLLA155SN727)	-	KBL2.1-S
30-4120	G	105030-4120	105100-7600 [23600-2000A]	105015-7640 (NP-DLLA145SN764)	-	KBL2.1-S
30-4130	-	105030-4130	105100-7490 [23600-1930A]	105015-7410 (NP-DLLA157SN741)	-	KBL2.1-S
30-4140	A	105030-4140	105100-7500 [16600 Z5571]	105015-7430 (NP-DLLA155SN743)	-	KBL2.1-S
30-4140	A1	105030-4140	105100-7810 [16600 Z5575]	105015-8150 (NP-DLLA155SN815)	-	KBL2.1-S
30-4140	A3	105030-4140	105101-7120 [16600 Z5578]	105015-8680 (NP-DLLA150SN868)	-	KBL2.1-S
30-4140	A7	105030-4140	105101-8590 [16600-Z5716]	105025-3120 (NP-DLLA155SM312)	-	KBL2.1-S
30-4140	C	105030-4140	105101-7240 [16600 Z5604]	105015-8880 (NP-DLLA145SN888)	-	KBL2.1-S
30-4140	E	105030-4140	105101-7250 [16600 Z5605]	105015-8910 (NP-DLLA145SN891)	-	KBL2.1-S
30-4140	E2	105030-4140	105101-7990 [16600-Z5664]	105015-8680 (NP-DLLA150SN868)	-	KBL2.1-S
30-4140	F	105030-4140	105101-7630 [16600 Z5610]	105015-9600 (NP-DLLA150SN960)	-	KBL2.1-S
30-4150	-	105030-4150	105100-7530 [23600-1842A]	105015-7470 (NP-DLLA160SN747)	-	KBL2.1-S
30-4160	-	105030-4160	105100-7570 [23600-1843A]	105015-7580 (NP-DLLA150SN758)	-	KBL2.1-S
30-4170	-	105030-4170	105100-7690 [23600-2060A]	105015-7580 (NP-DLLA150SN758)	-	KBL2.1-S
30-4170	E	105030-4170	105100-7980 [23600-2170A]	105015-8460 (NP-DLLA150SN846)	-	KBL2.1-S
30-4190	E2	105030-4190	105100-7720 [16600 97071]	105015-7890 (NP-DLLA155SN789)	-	KBL2.1-S
30-4190	E3	105030-4190	105100-7710 [16600 97072]	105015-7880 (NP-DLLA155SN788)	-	KBL2.1-S

Note: \* The number in brackets [ ] is the manufacturer's part number.

1. Use the nozzle service kit for nozzle replacement of KBL2.3-S, KBL2.4-S and KBL2.4-P type nozzle holders.  
Never replace only the nozzle itself of these types.



## STAMPING & TYPE REFERENCE

Stamping mark	Discrimination mark	Nozzle holder part no.	Nozzle & nozzle holder assembly no.*	Nozzle part no. (Stamping mark)	Nozzle service kit no. <sup>1</sup>	Nozzle holder type
30-4190	E4	105030-4190	105101-7040 [16600 97073]	105015-8580 (NP-DLLA155SN858)	-	KBL2.1-S
30-4190	E9	105030-4190	105101-7590 [16600 97101]	105015-9550 (NP-DLLA155SN955)	-	KBL2.1-S
30-4190	E9	105030-4190	105101-7591 [16600-97101]	105015-9551 (NP-DLLA155SN955)	-	KBL2.1-S
30-4190	N1	105030-4190	105100-7820 [16600 95500]	105015-8160 (NP-DLLA157SN816)	-	KBL2.1-S
30-4200	-	105030-4200	105100-7750 [23600-1822A]	105015-8020 (NP-DLLA150SN802)	-	KBL2.1-S
30-4210	F1	105030-4210	105100-7770 [16600 96565]	105015-8030 (NP-DLLA143SN803)	-	KBL2.1-S
30-4210	F2	105030-4210	105100-7780 [16600 96566]	105015-8040 (NP-DLLA149SN804)	-	KBL2.1-S
30-4210	F3	105030-4210	105100-7790 [16600 96567]	105015-8050 (NP-DLLA143SN805)	-	KBL2.1-S
30-4210	F4	105030-4210	105100-7830 [16600 96568]	105015-8170 (NP-DLLA151SN817)	-	KBL2.1-S
30-4210	F5	105030-4210	105100-7930 [16600 96569]	105015-8400 (NP-DLLA150SN840)	-	KBL2.1-S
30-4210	F6	105030-4210	105101-7780 [16600-96607]	105015-8430 (NP-DLLA150SN843)	-	KBL2.1-S
30-4210	F7	105030-4210	105100-7940 [16600 96571]	105015-8410 (NP-DLLA148SN841)	-	KBL2.1-S
30-4210	F8	105030-4210	105100-7950 [16600 96572]	105015-8420 (NP-DLLA153SN842)	-	KBL2.1-S
30-4210	F9	105030-4210	105101-7030 [16600 96573]	105015-8540 (NP-DLLA150SN854)	-	KBL2.1-S
30-4210	H1	105030-4210	105101-7170 [16600 96574]	105015-8420 (NP-DLLA153SN842)	-	KBL2.1-S
30-4210	H3	105030-4210	105101-7210 [16600 96576]	105015-8840 (NP-DLLA143SN884)	-	KBL2.1-S
30-4210	H9	105030-4210	105101-7930 [16600-96609]	105015-8770 (NP-DLLA150SN877)	-	KBL2.1-S
30-4240	-	105030-4240	105100-7840 [23600-2120A]	105015-8180 (NP-DLLA150SN818)	-	KBL2.1-S
30-4250	6	105030-4250	105101-7310 [ME160284]	105015-8950 (NP-DLLA160SN895)	-	KBL2.1-S
30-4250	F	105030-4250	105100-7860 [ME120371]	105015-8220 (NP-DLLA160SN822)	-	KBL2.1-S
30-4250	F	105030-4250	105100-7861 [ME120371]	105015-8221 (NP-DLLA160SN822)	-	KBL2.1-S
30-4250	X	105030-4250	105101-7020 [ME120517]	105015-8510 (NP-DLLA160SN851)	-	KBL2.1-S
30-4290	1A	105030-4290	105100-7990 [ME076565]	105015-8470 (NP-DLLA154SN847)	-	KBL2.1-S
30-4290	1B	105030-4290	105101-7130 [ME076614]	105015-8470 (NP-DLLA154SN847)	-	KBL2.1-S
30-4290	2A	105030-4290	105101-7000 [ME076566]	105015-8480 (NP-DLLA157SN848)	-	KBL2.1-S
30-4290	2B	105030-4290	105101-7140 [ME076615]	105015-8480 (NP-DLLA157SN848)	-	KBL2.1-S
30-4290	5C	105030-4290	105101-7530 [ME047328]	105015-6230 (NP-DLLA150SN623)	-	KBL2.1-S
30-4340	-	105030-4340	105101-7060 [1-15300-260-0]	105015-8620 (NP-DLLA150SN862)	-	KBL2.1-S

Note: \* The number in brackets [ ] is the manufacturer's part number.

1. Use the nozzle service kit for nozzle replacement of KBL2.3-S, KBL2.4-S and KBL2.4-P type nozzle holders.  
Never replace only the nozzle itself of these types.

# STAMPING & TYPE REFERENCE

Stamping mark	Discrimination mark	Nozzle holder part no.	Nozzle & nozzle holder assembly no.*	Nozzle part no. (Stamping mark)	Nozzle service kit no. <sup>1</sup>	Nozzle holder type
30-4340	A	105030-4340	105101-7150 [1-15300-269-0]	105015-8700 (NP-DLLA150SN870)	-	KBL2.1-S
30-4341	-	105030-4341	105101-7061 [1-15300-260-1]	105015-8620 (NP-DLLA150SN862)	-	KBL2.1-S
30-4341	A	105030-4341	105101-7151 [1-15300-269-1]	105015-8700 (NP-DLLA150SN870)	-	KBL2.1-S
30-4341	B	105030-4341	105100-7331 [1-15300-187-2]	105015-7050 (NP-DLLA150SN705)	-	KBL2.1-S
30-4341	C	105030-4341	105101-7760 [1-15300-327-0]	105015-9190 (NP-DLLA156SN919)	-	KBL2.1-S
30-4370	0	105030-4370	105101-7090 [ME120606]	105015-8220 (NP-DLLA160SN822)	-	KBL2.1-S
30-4371	0	105030-4371	105101-7091 [ME120606]	105015-8221 (NP-DLLA160SN822)	-	KBL2.1-S
30-4380	A3	105030-4380	105101-7070 [16600 Z5603]	105015-8680 (NP-DLLA150SN868)	-	KBL2.1-S
30-4390	-	105030-4390	105101-7230 [16600 95016]	105015-8870 (NP-DLLA140SN887)	-	KBL2.1-S
30-4390	K	105030-4390	105101-7231 [16600 95017]	105015-8870 (NP-DLLA140SN887)	-	KBL2.1-S
30-4430	-	105030-4430	105101-7350 [23600-2400A]	105015-8590 (NP-DLLA150SN859)	-	KBL2.1-S
30-4450	3	105030-4450	105101-7410 [ME160666]	105015-8950 (NP-DLLA160SN895)	-	KBL2.1-S
30-4451	-	105030-4451	105101-7600 [ME161080]	105015-9400 (NP-DLLA157SN940)	-	KBL2.1-S
30-4451	-	105030-4451	105101-7610 [ME3H6015]	105015-9400 (NP-DLLA157SN940)	-	KBL2.1-S
30-4451	3	105030-4451	105101-7411 [ME160666]	105015-9400 (NP-DLLA157SN940)	-	KBL2.1-S
30-4460	4	105030-4460	105101-7420 [ME120897]	105015-8220 (NP-DLLA160SN822)	-	KBL2.1-S
30-4461	4	105030-4461	105101-7421 [ME120897]	105015-8221 (NP-DLLA160SN822)	-	KBL2.1-S
30-4510	9	105030-4510	105101-7640 [ME093276]	105015-9800 (NP-DLLA157SN980)	-	KBL2.1-S
30-4510	R	105030-4510	105100-7971 [ME091276]	105015-9440 (NP-DLLA157SN944)	-	KBL2.1-S
30-4520	-	105030-4520	105101-7540 [6136-12-3400]	105015-5470 (NP-DLLA142S344N547)	-	KBL2.1-S
30-4530	-	105030-4530	105101-7550 [---]	105015-9480 (NP-DLLA150SN948)	-	KBL2.1-S
30-4580	Z	105030-4580	105101-7690 [ME150862]	105015-9870 (NP-DLLA150SN987)	-	KBL2.1-S
30-4610	-	105030-4610	105101-7710 [8-94394-213-0]	105025-0050 (NP-DLLA152SM005)	-	KBL2.1-S
30-4610	A	105030-4610	105101-7730 [8-94394-491-0]	105025-0070 (NP-DLLA153SM007)	-	KBL2.1-S
30-4610	B	105030-4610	105101-7740 [8-94393-335-1]	105025-0080 (NP-DLLA156SM008)	-	KBL2.1-S
30-4650	-	105030-4650	105101-7860 [8-94395-696-0]	105025-0080 (NP-DLLA156SM008)	-	KBL2.1-S
30-4650	C	105030-4650	105101-8200 [8-94390-892-0]	105025-1500 (NP-DLLA154SM150)	-	KBL2.1-S
30-4650	C	105030-4650	105101-8201 [8-94390-892-1]	105025-1500 (NP-DLLA154SM150)	-	KBL2.1-S

Note: \* The number in brackets [ ] is the manufacturer's part number.

1. Use the nozzle service kit for nozzle replacement of KBL2.3-S, KBL2.4-S and KBL2.4-P type nozzle holders. Never replace only the nozzle itself of these types.

## STAMPING & TYPE REFERENCE

Stamping mark	Discrimination mark	Nozzle holder part no.	Nozzle & nozzle holder assembly no.*	Nozzle part no. (Stamping mark)	Nozzle service kit no. <sup>1</sup>	Nozzle holder type
30-4650	L	105030-4650	105101-7861 [8-94395-696-1]	105025-0080 (NP-DLLA156SM008)	-	KBL2.1-S
30-4651	C	105030-4651	105101-8202 [8-94390-892-2]	105025-1500 (NP-DLLA154SM150)	-	KBL2.1-S
30-4651	C	105030-4651	105101-8203 [8-94390-892-3]	105025-1500 (NP-DLLA154SM150)	-	KBL2.1-S
30-4651	L	105030-4651	105101-7862 [8-94395-696-2]	105025-0080 (NP-DLLA156SM008)	-	KBL2.1-S
30-4651	L	105030-4651	105101-7863 [8-94395-696-3]	105025-0080 (NP-DLLA156SM008)	-	KBL2.1-S
30-4660	-	105030-4660	105101-7870 [8-94395-697-0]	105025-0050 (NP-DLLA152SM005)	-	KBL2.1-S
30-4660	-	105030-4660	105101-7871 [8-94390-049-0]	105025-0051 (NP-DLLA152SM005)	-	KBL2.1-S
30-4660	H	105030-4660	105101-7872 [8-94390-049-1]	105025-0051 (NP-DLLA152SM005)	-	KBL2.1-S
30-4680	-	105030-4680	105101-7900 [23600-2790A]		105019-0560	KBL2.3-S
30-4680	A	105030-4680	105101-7901 [23600-2791A]		105019-0561	KBL2.3-S
30-4681	A	105030-4681	105101-7902 [23600-2791A]		105019-0561	KBL2.3-S
30-4682	279	105030-4682	105101-7904 [23600-2792B]		105019-0561	KBL2.3-S
30-4682	A	105030-4682	105101-7903 [23600-2792A]		105019-0561	KBL2.3-S
30-4711	B	105030-4711	105101-7961 [---]		105019-0740	KBL2.3-S
30-4711	C	105030-4711	105101-8460 [---]		105019-2250	KBL2.3-S
30-4711	E	105030-4711	105101-8520 [---]		105019-2450	KBL2.3-S
30-4711	F	105030-4711	105101-8530 [---]		105019-2490	KBL2.3-S
30-4711	G	105030-4711	105101-8700 [---]		105019-2920	KBL2.3-S
30-4790	-	105030-4790	105101-8080 [23600-2900A]		105019-0750	KBL2.3-S
30-4810	E7	105030-4810	105101-8170 [16600-Z5669]	105025-1360 (NP-DLSLA155SM136)	-	KBL2.1-S
30-4830	E8	105030-4830	105101-8250 [16600-Z5670]	105025-1510 (NP-DLLA155SM151)	-	KBL2.1-S
30-4850	-	105030-4850	105101-8300 [23600-3110A]		105019-0970	KBL2.3-S
30-4850	A	105030-4850	105101-8301 [23600-3111A]		105019-0970	KBL2.3-S
31-3830	-	105031-3830	105100-5600 [1-15300-108-0]	105015-5180 (NP-DLLA160SN518)	-	KBL2.1-S
31-3830	B	105031-3830	105100-5660 [1-15300-117-1]	105015-5180 (NP-DLLA160SN518)	-	KBL2.1-S
31-3830	H	105031-3830	105100-7000 [1-15300-138-0]	105015-5770 (NP-DLLA160SN577)	-	KBL2.1-S
31-3830	H	105031-3830	105100-7001 [1-15300-138-1]	105015-6250 (NP-DLLA154SN625)	-	KBL2.1-S
31-3831	H	105031-3831	105100-7002 [1-15300-138-1]	105015-6250 (NP-DLLA154SN625)	-	KBL2.1-S

Note: \* The number in brackets [ ] is the manufacturer's part number.

1. Use the nozzle service kit for nozzle replacement of KBL2.3-S, KBL2.4-S and KBL2.4-P type nozzle holders.  
Never replace only the nozzle itself of these types.

## STAMPING & TYPE REFERENCE

Stamping mark	Discrimination mark	Nozzle holder part no.	Nozzle & nozzle holder assembly no.*	Nozzle part no. (Stamping mark)	Nozzle service kit no. <sup>1</sup>	Nozzle holder type
31-3840	-	105031-3840	105100-5610 [1-15300-109-0]	105015-4760 (NP-DLLA154S364N476)	-	KBL2.1-S
31-3840	B	105031-3840	105100-5670 [1-15300-118-1]	105015-4760 (NP-DLLA154S364N476)	-	KBL2.1-S
31-3840	H	105031-3840	105100-7010 [1-15300-141-0]	105015-5780 (NP-DLLA154SN578)	-	KBL2.1-S
31-3841	H	105031-3841	105100-7011 [1-15300-141-0]	105015-5780 (NP-DLLA154SN578)	-	KBL2.1-S
31-3842	H	105031-3842	105100-7012 [1-15300-141-1]	105015-5780 (NP-DLLA154SN578)	-	KBL2.1-S
31-4500	5	105031-4500	105101-7520 [ME092857]	105015-9440 (NP-DLLA157SN944)	-	KBL2.1-S
31-4500	6D	105031-4500	105101-8150 [ME098757]	105025-1220 (NP-DLLA150SM122)	-	KBL2.1-S
31-4500	A	105031-4500	105100-5530 [ME066390]	105015-5070 (NP-DLLA160S325N507)	-	KBL2.1-S
31-4500	C	105031-4500	105100-5570 [ME066435]	105015-5070 (NP-DLLA160S325N507)	-	KBL2.1-S
31-4500	C	105031-4500	105100-7430 [ME066435]	105015-7310 (NP-DLLA160SN731)	-	KBL2.1-S
31-4500	H	105031-4500	105100-7890 [ME091246]	105015-8270 (NP-DLLA160SN827)	-	KBL2.1-S
31-4500	L	105031-4500	105100-7900 [ME091247]	105015-8280 (NP-DLLA160SN828)	-	KBL2.1-S
31-4500	N	105031-4500	105100-7960 [ME091275]	105015-8440 (NP-DLLA160SN844)	-	KBL2.1-S
31-4500	Q	105031-4500	105100-7150 [ME060110]	105015-6580 (NP-DLLA160SN658)	-	KBL2.1-S
31-4500	Q4	105031-4500	105100-7440 [ME6H6045B]	105015-7320 (NP-DLLA160SN732)	-	KBL2.1-S
31-4500	R	105031-4500	105100-7970 [ME091276]	105015-8450 (NP-DLLA160SN845)	-	KBL2.1-S
31-4500	S	105031-4500	105101-7010 [ME091308]	105015-8500 (NP-DLLA160SN850)	-	KBL2.1-S
31-4500	T	105031-4500	105100-5830 [ME066499]	105015-5440 (NP-DLLA157SN544)	-	KBL2.1-S
31-4500	Y	105031-4500	105100-5890 [ME066565]	105015-5510 (NP-DLLA157SN551)	-	KBL2.1-S
31-4500	YY	105031-4500	105100-7650 [ME7H6028]	105015-7770 (NP-DLLA157SN777)	-	KBL2.1-S
31-4530	B	105031-4530	105100-7230 [ME056542]	105015-6710 (NP-DLLA160SN671)	-	KBL2.1-S
31-4530	F	105031-4530	105100-7660 [ME056731]	105015-7790 (NP-DLLA150SN779)	-	KBL2.1-S
31-4530	G	105031-4530	105100-7730 [ME056804]	105015-6150 (NP-DLLA150SN615)	-	KBL2.1-S
31-4530	J	105031-4530	105100-5720 [ME056275]	105015-5330 (NP-DLLA154SN533)	-	KBL2.1-S
31-4530	K	105031-4530	105100-7870 [ME056817]	105015-8230 (NP-DLLA163SN823)	-	KBL2.1-S
31-4530	L	105031-4530	105100-5730 [ME056276]	105015-5340 (NP-DLLA150SN534)	-	KBL2.1-S
31-4530	M	105031-4530	105100-7110 [ME056473]	105015-6150 (NP-DLLA150SN615)	-	KBL2.1-S
31-4530	N	105031-4530	105100-7910 [ME056837]	105015-8310 (NP-DLLA163SN831)	-	KBL2.1-S

Note: \* The number in brackets [ ] is the manufacturer's part number.

1. Use the nozzle service kit for nozzle replacement of KBL2.3-S, KBL2.4-S and KBL2.4-P type nozzle holders. Never replace only the nozzle itself of these types.

## STAMPING & TYPE REFERENCE

Stamping mark	Discrimination mark	Nozzle holder part no.	Nozzle & nozzle holder assembly no.*	Nozzle part no. (Stamping mark)	Nozzle service kit no. <sup>1</sup>	Nozzle holder type
31-4530	P	105031-4530	105100-7740 [ME056805]	105015-7790 (NP-DLLA150SN779)	-	KBL2.1-S
31-4530	R	105031-4530	105100-7880 [ME056818]	105015-7790 (NP-DLLA150SN779)	-	KBL2.1-S
31-4530	S	105031-4530	105100-7340 [ME050807]	105015-6370 (NP-DLLA150SN637)	-	KBL2.1-S
31-4530	U	105031-4530	105100-5820 [ME056329]	105015-5390 (NP-DLLA160SN539)	-	KBL2.1-S
31-4530	U4	105031-4530	105100-7630 [ME7H6043]	105015-7800 (NP-DLLA155SN780)	-	KBL2.1-S
31-4530	V	105031-4530	105100-7920 [ME056838]	105015-8320 (NP-DLLA150SN832)	-	KBL2.1-S
31-4530	X	105031-4530	105100-5880 [ME056357]	105015-5480 (NP-DLLA150SN548)	-	KBL2.1-S
31-4580	A	105031-4580	105100-6080 [23600-1640A]	105015-4920 (NP-DLLA150S345N492)	-	KBL2.1-S
31-4580	B	105031-4580	105100-7060 [23600-1641A]	105015-4920 (NP-DLLA150S345N492)	-	KBL2.1-S
31-4580	C	105031-4580	105100-7090 [23600-1642A]	105015-6120 (NP-DLLA138SN612)	-	KBL2.1-S
31-4580	J	105031-4580	105100-7091 [23600-1643A]	105015-7420 (NP-DLLA150SN742)	-	KBL2.1-S
31-4610	-	105031-4610	105100-7030 [16600 90063]	105015-5030 (NP-DLLA154SN503)	-	KBL2.1-S
31-4630	A9	105031-4630	105100-6410 [16600 96512]	105015-5800 (NP-DLLA143SN580)	-	KBL2.1-S
31-4630	C1	105031-4630	105100-7120 [16600-96513]	105015-6320 (NP-DLLA143SN632)	-	KBL2.1-S
31-4630	C2	105031-4630	105100-7130 [16600 96514]	105015-6340 (NP-DLLA140SN634)	-	KBL2.1-S
31-4630	C5	105031-4630	105100-7540 [16600 96562]	105015-7490 (NP-DLLA153SN749)	-	KBL2.1-S
31-4630	C7	105031-4630	105100-7670 [16600 96564]	105015-7810 (NP-DLLA150SN781)	-	KBL2.1-S
31-4630	D	105031-4630	105100-7200 [16600 96516]	105015-5290 (NP-DLLA152SN529)	-	KBL2.1-S
31-4630	FA	105031-4630	105100-7460 [16600 96560]	105015-7340 (NP-DLLA149SN734)	-	KBL2.1-S
31-4630	FB	105031-4630	105100-7470 [16600 96561]	105015-7350 (NP-DLLA143SN735)	-	KBL2.1-S
31-4630	FT	105031-4630	105100-7450 [16600 96519]	105015-7330 (NP-DLLA146SN733)	-	KBL2.1-S
31-4790	B2	105031-4790	105100-7140 [16600 97062]	105015-5450 (NP-DLLA148SN545)	-	KBL2.1-S
31-4790	B5	105031-4790	105100-7210 [16600 97063]	105015-6690 (NP-DLLA155SN669)	-	KBL2.1-S
31-4790	B6	105031-4790	105100-7240 [16600 97064]	105015-6810 (NP-DLLA152SN681)	-	KBL2.1-S
31-4790	B7	105031-4790	105100-7270 [16600 97066]	105015-6930 (NP-DLLA148SN693)	-	KBL2.1-S
31-4790	B9	105031-4790	105100-7610 [16600 97069]	105015-6810 (NP-DLLA152SN681)	-	KBL2.1-S
31-4790	E1	105031-4790	105100-7700 [16600 97070]	105015-6810 (NP-DLLA152SN681)	-	KBL2.1-S
31-4800	-	105031-4800	105100-7170 [1-15300-149-0]	105015-6610 (NP-DLLA154SN661)	-	KBL2.1-S

Note: \* The number in brackets [ ] is the manufacturer's part number.

1. Use the nozzle service kit for nozzle replacement of KBL2.3-S, KBL2.4-S and KBL2.4-P type nozzle holders.  
Never replace only the nozzle itself of these types.

# STAMPING & TYPE REFERENCE

Stamping mark	Discrimination mark	Nozzle holder part no.	Nozzle & nozzle holder assembly no.*	Nozzle part no. (Stamping mark)	Nozzle service kit no. <sup>1</sup>	Nozzle holder type
31-4800	C	105031-4800	105100-7380 [1-15300-195-0]	105015-7030 (NP-DLLA147SN703)	-	KBL2.1-S
31-4800	F	105031-4800	105100-7640 [1-15300-201-0]	105015-7760 (NP-DLLA149SN776)	-	KBL2.1-S
31-4801	2N	105031-4801	105100-7221 [1-15300-179-1]	105015-6670 (NP-DLLA154SN667)	-	KBL2.1-S
31-4801	2S	105031-4801	105100-7681 [1-15300-206-1]	105015-7830 (NP-DLLA149SN783)	-	KBL2.1-S
31-4801	2T	105031-4801	105100-7381 [1-15300-195-1]	105015-7030 (NP-DLLA147SN703)	-	KBL2.1-S
31-4801	2X	105031-4801	105100-7171 [1-15300-149-1]	105015-6610 (NP-DLLA154SN661)	-	KBL2.1-S
31-4801	2Y	105031-4801	105100-7311 [1-15300-194-1]	105015-7030 (NP-DLLA147SN703)	-	KBL2.1-S
31-4801	3C	105031-4801	105100-7801 [1-15300-218-1]	105015-8100 (NP-DLLA149SN810)	-	KBL2.1-S
31-4801	3D	105031-4801	105101-7980 [1-15300-332-0]	105025-0700 (NP-DLLA152SM070)	-	KBL2.1-S
31-4830	-	105031-4830	105100-7190 [1-15300-163-0]	105015-6650 (NP-DLLA154SN665)	-	KBL2.1-S
31-4830	-	105031-4830	105100-7191 [1-15300-163-1]	105015-6651 (NP-DLLA154SN665)	-	KBL2.1-S
31-4830	A	105031-4830	105100-7850 [1-15300-204-0]	105015-8200 (NP-DLLA156SN820)	-	KBL2.1-S
31-4830	C	105031-4830	105101-7430 [1-15300-294-0]	105015-8990 (NP-DLLA144SN899)	-	KBL2.1-S
31-4830	F	105031-4830	105101-7560 [1-15300-317-0]	105015-9500 (NP-DLLA151SN950)	-	KBL2.1-S
31-4831	A	105031-4831	105100-7851 [1-15300-204-1]	105015-8200 (NP-DLLA156SN820)	-	KBL2.1-S
31-4831	C	105031-4831	105101-7431 [1-15300-294-1]	105015-8990 (NP-DLLA144SN899)	-	KBL2.1-S
31-4831	E	105031-4831	105100-7192 [1-15300-163-2]	105015-6651 (NP-DLLA154SN665)	-	KBL2.1-S
31-4831	F	105031-4831	105101-7561 [1-15300-317-1]	105015-9500 (NP-DLLA151SN950)	-	KBL2.1-S
31-4831	K	105031-4831	105100-7003 [1-15300-138-2]	105015-6250 (NP-DLLA154SN625)	-	KBL2.1-S
31-4870	-	105031-4870	105100-7220 [1-15300-179-0]	105015-6670 (NP-DLLA154SN667)	-	KBL2.1-S
31-4870	E	105031-4870	105100-7310 [1-15300-194-0]	105015-7030 (NP-DLLA147SN703)	-	KBL2.1-S
31-4870	N	105031-4870	105100-7680 [1-15300-206-0]	105015-7830 (NP-DLLA149SN783)	-	KBL2.1-S
31-4870	X	105031-4870	105100-7800 [1-15300-218-0]	105015-8100 (NP-DLLA149SN810)	-	KBL2.1-S
31-4890	-	105031-4890	105100-7260 [23600-1740A]	105015-6860 (NP-DLLA138SN686)	-	KBL2.1-S
31-4890	B	105031-4890	105100-7261 [23600-1741A]	105015-7590 (NP-DLLA134SN759)	-	KBL2.1-S
31-4960	-	105031-4960	105100-7300 [23600-0199A]	105015-6870 (NP-DLLA155SN687)	-	KBL2.1-S
31-4970	-	105031-4970	105100-7330 [1-15300-187-1]	105015-7050 (NP-DLLA150SN705)	-	KBL2.1-S
31-4980	-	105031-4980	105100-7360 [23600-1820A]	105015-6870 (NP-DLLA155SN687)	-	KBL2.1-S

Note: \* The number in brackets [ ] is the manufacturer's part number.

1. Use the nozzle service kit for nozzle replacement of KBL2.3-S, KBL2.4-S and KBL2.4-P type nozzle holders. Never replace only the nozzle itself of these types.

## STAMPING & TYPE REFERENCE

Stamping mark	Discrimination mark	Nozzle holder part no.	Nozzle & nozzle holder assembly no.*	Nozzle part no. (Stamping mark)	Nozzle service kit no. <sup>1</sup>	Nozzle holder type
31-4990	-	105031-4990	105100-7370 [15707-53001]	105015-7140 (NP-DLLA141SN714)	-	KBL2.1-S
31-4990	K	105031-4990	105101-8430 [1G411-53001]	105025-2120 (NP-DLLA150SM212)	-	KBL2.1-S
31-4990	L	105031-4990	105101-8620 [16554-53001]	105025-3500 (NP-DLLA140SM350)	-	KBL2.1-S
31-5440	-	105031-5440	105100-7020 [23600-1670A]	105015-4520 (NP-DLLA150S394N452)	-	KBL2.1-S
31-5440	A	105031-5440	105100-7080 [23600-1671A]	105015-6050 (NP-DLLA150SN605)	-	KBL2.1-S
31-5440	H	105031-5440	105100-7081 [23600-1672A]	105015-7300 (NP-DLLA150SN730)	-	KBL2.1-S
31-6120	-	105031-6120	105100-7590 [23600-1990A]	105015-7620 (NP-DLLA150SN762)	-	KBL2.1-S
31-6120	-	105031-6120	105100-7591 [23600-1991A]	105015-7620 (NP-DLLA150SN762)	-	KBL2.1-S
31-6120	-	105031-6120	105100-7592 [23600-1991B]	105015-7620 (NP-DLLA150SN762)	-	KBL2.1-S
31-6120	-	105031-6120	105100-7593 [23600-1992A]	105015-7620 (NP-DLLA150SN762)	-	KBL2.1-S
31-6120	G	105031-6120	105101-7110 [23600-2230A]	105015-7620 (NP-DLLA150SN762)	-	KBL2.1-S
31-7140	-	105031-7140	105100-5810 [23600-1600A]	105015-5410 (NP-DLLA150SN541)	-	KBL2.1-S
31-7140	C	105031-7140	105100-5920 [23600-1601A]	105015-5540 (NP-DLLA150SN554)	-	KBL2.1-S
31-7140	E	105031-7140	105100-7040 [23600-1602A]	105015-4700 (NP-DLLA150S424N470)	-	KBL2.1-S
31-7150	E	105031-7150	105100-5930 [---]	105015-5550 (NP-DLLA150SN555)	-	KBL2.1-S
31-7150	F	105031-7150	105100-7050 [23600-1621B]	105015-5550 (NP-DLLA150SN555)	-	KBL2.1-S
31-7160	-	105031-7160	105100-6070 [23600-1650A]	105015-4700 (NP-DLLA150S424N470)	-	KBL2.1-S
31-7160	D	105031-7160	105100-7070 [23600-1651A]	105015-4700 (NP-DLLA150S424N470)	-	KBL2.1-S
31-7160	H	105031-7160	105100-7320 [23600-1790A]	105015-7040 (NP-DLLA150SN704)	-	KBL2.1-S
31-7170	-	105031-7170	105100-7100 [23600-1690A]	105015-5550 (NP-DLLA150SN555)	-	KBL2.1-S
31-7180	-	105031-7180	105100-7160 [23600-1720A]	105015-5550 (NP-DLLA150SN555)	-	KBL2.1-S
31-7190	-	105031-7190	105100-7290 [23600-1750A]	105015-7020 (NP-DLLA150SN702)	-	KBL2.1-S
31-7200	-	105031-7200	105100-7350 [23600-1751A]	105015-7020 (NP-DLLA150SN702)	-	KBL2.1-S
31-7200	G	105031-7200	105100-7480 [23600-1910A]	105015-7390 (NP-DLLA150SN739)	-	KBL2.1-S
31-7220	-	105031-7220	105101-7100 [23600-2220A]		105019-0030	KBL2.3-S
31-7230	-	105031-7230	105101-7160 [23600-2240A]		105019-0010	KBL2.3-S
31-7230	-	105031-7230	105101-7271 [23600-2300A]		105019-0070	KBL2.3-S
31-7230	A	105031-7230	105101-7202 [23600-2271A]		105019-0050	KBL2.3-S

Note: \* The number in brackets [ ] is the manufacturer's part number.

1. Use the nozzle service kit for nozzle replacement of KBL2.3-S, KBL2.4-S and KBL2.4-P type nozzle holders.  
Never replace only the nozzle itself of these types.

## STAMPING & TYPE REFERENCE

Stamping mark	Discrimination mark	Nozzle holder part no.	Nozzle & nozzle holder assembly no.*	Nozzle part no. (Stamping mark)	Nozzle service kit no. <sup>1</sup>	Nozzle holder type
31-7230	B	105031-7230	105101-7372 [23600-2450B]		105019-0140	KBL2.3-S
31-7230	G	105031-7230	105101-7332 [23600-2430C]		105019-0100	KBL2.3-S
31-7230	K	105031-7230	105101-7280 [23600-2320A]		105019-0010	KBL2.3-S
31-7230	R	105031-7230	105101-7331 [23600-2430B]		105019-0100	KBL2.3-S
31-7230	T	105031-7230	105101-7720 [23600-2720A]		105019-0520	KBL2.3-S
31-7230	U	105031-7230	105101-7281 [23600-2320B]		105019-0010	KBL2.3-S
31-7230	V	105031-7230	105101-7161 [23600-2240B]		105019-0010	KBL2.3-S
31-7230	W	105031-7230	105101-7721 [23600-2720B]		105019-0520	KBL2.3-S
31-7240	-	105031-7240	105101-7101 [23600-2221A]		105019-0030	KBL2.3-S
31-7240	-	105031-7240	105101-7300 [23600-2350A]		105019-0300	KBL2.3-S
31-7240	L	105031-7240	105101-7401 [23600-2470B]		105019-0150	KBL2.3-S
31-7240	S	105031-7240	105101-7480 [23600-2520A]		105019-0190	KBL2.3-S
31-7241	-	105031-7241	105101-7102 [23600-2221A]		105019-0030	KBL2.3-S
31-7241	247	105031-7241	105101-7403 [23600-2470D]		105019-0150	KBL2.3-S
31-7241	252	105031-7241	105101-7483 [23600-2520D]		105019-0190	KBL2.3-S
31-7241	255	105031-7241	105101-7513 [23600-2550D]		105019-0210	KBL2.3-S
31-7241	P	105031-7241	105101-7482 [23600-2520C]		105019-0190	KBL2.3-S
31-7241	R	105031-7241	105101-7512 [23600-2550C]		105019-0210	KBL2.3-S
31-7241	S	105031-7241	105101-7402 [23600-2470C]		105019-0150	KBL2.3-S
31-7241	X	105031-7241	105101-7301 [23600-2350B]		105019-0300	KBL2.3-S
31-7250	-	105031-7250	105101-7190 [23600-2260A]		105019-0000	KBL2.3-S
31-7251	-	105031-7251	105101-7191 [23600-2260A]		105019-0000	KBL2.3-S
31-7260	-	105031-7260	105101-7200 [23600-2270A]		105019-0050	KBL2.3-S
31-7260	A	105031-7260	105101-7201 [23600-2271A]		105019-0050	KBL2.3-S
31-7270	-	105031-7270	105101-7270 [23600-2300A]		105019-0070	KBL2.3-S
31-7270	F	105031-7270	105101-7371 [23600-2450B]		105019-0140	KBL2.3-S
31-7280	H	105031-7280	105101-7330 [23600-2430A]		105019-0100	KBL2.3-S
31-7290	F	105031-7290	105101-7370 [23600-2450A]		105019-0140	KBL2.3-S

Note: \* The number in brackets [ ] is the manufacturer's part number.

1. Use the nozzle service kit for nozzle replacement of KBL2.3-S, KBL2.4-S and KBL2.4-P type nozzle holders. Never replace only the nozzle itself of these types.



## STAMPING & TYPE REFERENCE

Stamping mark	Discrimination mark	Nozzle holder part no.	Nozzle & nozzle holder assembly no.*	Nozzle part no. (Stamping mark)	Nozzle service kit no. <sup>1</sup>	Nozzle holder type
31-7300	-	105031-7300	105101-7400 [23600-2470A]		105019-0150	KBL2.3-S
31-7310	-	105031-7310	105101-7490 [23600-2530A]		105019-0270	KBL2.3-S
31-7310	A	105031-7310	105101-8610 [23600-3420A]		105019-2620	KBL2.3-S
31-7310	B	105031-7310	105101-8660 [23600-3570A]		105019-2830	KBL2.3-S
31-7320	-	105031-7320	105101-7510 [23600-2550A]		105019-0210	KBL2.3-S
31-7320	A	105031-7320	105101-7511 [23600-2550B]		105019-0210	KBL2.3-S
31-7330	-	105031-7330	105101-7770 [23600-2730A]		105019-0530	KBL2.3-S
31-7331	-	105031-7331	105101-7771 [23600-2731A]		105019-0530	KBL2.3-S
31-7331	F	105031-7331	105101-7772 [23600-2731B]		105019-0530	KBL2.3-S
31-7332	F	105031-7332	105101-7773 [23600-2731B]		105019-0530	KBL2.3-S
31-7360	E	105031-7360	105101-7910 [23600-2800A]		105019-0570	KBL2.3-S
31-7361	E	105031-7361	105101-7911 [23600-2800A]		105019-0570	KBL2.3-S
31-7362	N	105031-7362	105101-7912 [23600-2800B]		105019-0570	KBL2.3-S
31-7363	I	105031-7363	105101-8120 [23600-2950A]		105019-0710	KBL2.3-S
31-7363	N	105031-7363	105101-7913 [23600-2800B]		105019-0570	KBL2.3-S
31-7370	-	105031-7370	105101-7481 [23600-2520B]		105019-0190	KBL2.3-S
31-7390	F	105031-7390	105101-8220 [23600-3020A]		105019-0860	KBL2.3-S
31-7410	305	105031-7410	105101-8331 [23600-3050B]		105019-2020	KBL2.3-S
31-7410	N	105031-7410	105101-8330 [23600-3050A]		105019-2020	KBL2.3-S
31-7420	-	105031-7420	105101-8510 [23600-3370A]		105019-2430	KBL2.3-S
31-7430	-	105031-7430	105101-8650 [23600-3490A]		105019-2780	KBL2.3-S
31-7430	C	105031-7430	105101-8680 [23600-3590A]		105019-2870	KBL2.3-S
38-2000	-	105038-2000	105108-7000 [8-94474-389-1]	105017-0440 (NP-DLLA150PN044)	-	KBL2.1-P
41-2080	-	105041-2080	105110-7740 [8-94391-291-2]		105019-2190	KBL2.4-S
41-2080	A	105041-2080	105110-7750 [8-94390-795-2]		105019-2200	KBL2.4-S
41-2080	B	105041-2080	105110-7760 [8-94392-233-0]		105019-2210	KBL2.4-S
41-2081	-	105041-2081	105110-7741 [8-94391-291-3]		105019-2190	KBL2.4-S
41-2081	-	105041-2081	105110-7742 [8-94391-291-4]		105019-2190	KBL2.4-S

Note: \* The number in brackets [ ] is the manufacturer's part number.

1. Use the nozzle service kit for nozzle replacement of KBL2.3-S, KBL2.4-S and KBL2.4-P type nozzle holders.  
Never replace only the nozzle itself of these types.

## STAMPING & TYPE REFERENCE

Stamping mark	Discrimination mark	Nozzle holder part no.	Nozzle & nozzle holder assembly no.*	Nozzle part no. (Stamping mark)	Nozzle service kit no. <sup>1</sup>	Nozzle holder type
41-2081	E	105041-2081	105110-8030 [8-94392-058-0]		105019-2560	KBL2.4-S
41-2081	E	105041-2081	105110-8031 [8-94392-058-1]		105019-2560	KBL2.4-S
41-2081	G	105041-2081	105110-8110 [1-15300-389-0]		105019-2660	KBL2.4-S
41-2081	G	105041-2081	105110-8111 [1-15300-389-1]		105019-2660	KBL2.4-S
41-2081	H	105041-2081	105110-8140 [1-15300-404-0]		105019-2680	KBL2.4-S
41-2081	J	105041-2081	105110-8190 [1-15300-414-0]		105019-2720	KBL2.4-S
41-2081	K	105041-2081	105110-8210 [1-15300-418-0]		105019-2750	KBL2.4-S
41-2082	-	105041-2082	105110-7743 [8-94391-291-4]		105019-2190	KBL2.4-S
41-2082	E	105041-2082	105110-8032 [8-94392-058-1]		105019-2560	KBL2.4-S
41-2082	G	105041-2082	105110-8112 [1-15300-389-1]		105019-2660	KBL2.4-S
41-2082	H	105041-2082	105110-8141 [1-15300-404-0]		105019-2680	KBL2.4-S
41-2082	J	105041-2082	105110-8191 [1-15300-414-0]		105019-2720	KBL2.4-S
41-2082	K	105041-2082	105110-8211 [1-15300-418-0]		105019-2750	KBL2.4-S
41-2082	M	105041-2082	105110-8310 [1-15300-428-0]		105019-2840	KBL2.4-S
41-2100	U	105041-2100	105110-7780 [ME131608]		105019-2240	KBL2.4-S
41-2101	U	105041-2101	105110-7781 [ME131608]		105019-2240	KBL2.4-S
41-2102	W	105041-2102	105110-7782 [ME131980]		105019-2320	KBL2.4-S
41-2110	-	105041-2110	105110-7790 [8-94392-579-0]		105019-2280	KBL2.4-S
41-2110	-	105041-2110	105110-7791 [8-94392-579-1]		105019-2280	KBL2.4-S
41-2111	-	105041-2111	105110-7792 [8-94392-579-1]		105019-2280	KBL2.4-S
41-2120	A	105041-2120	105110-7821 [ME131983]		105019-2290	KBL2.4-S
41-2120	C	105041-2120	105110-8081 [ME300050]		105019-2630	KBL2.4-S
41-2120	E	105041-2120	105110-8271 [ME300637]		105019-2810	KBL2.4-S
41-2120	R	105041-2120	105110-8270 [ME300637]		105019-2810	KBL2.4-S
41-2120	S	105041-2120	105110-8080 [ME300050]		105019-2630	KBL2.4-S
41-2120	T	105041-2120	105110-7890 [ME132604]		105019-2320	KBL2.4-S
41-2120	V	105041-2120	105110-7820 [ME131983]		105019-2290	KBL2.4-S
41-2130	A	105041-2130	105110-7751 [8-94390-795-3]		105019-2200	KBL2.4-S

Note: \* The number in brackets [ ] is the manufacturer's part number.

1. Use the nozzle service kit for nozzle replacement of KBL2.3-S, KBL2.4-S and KBL2.4-P type nozzle holders.  
Never replace only the nozzle itself of these types.

## STAMPING & TYPE REFERENCE

Stamping mark	Discrimination mark	Nozzle holder part no.	Nozzle & nozzle holder assembly no.*	Nozzle part no. (Stamping mark)	Nozzle service kit no. <sup>1</sup>	Nozzle holder type
41-2130	A	105041-2130	105110-7752 [8-94390-795-4]		105019-2200	KBL2.4-S
41-2130	B	105041-2130	105110-7761 [8-94392-233-1]		105019-2210	KBL2.4-S
41-2130	B	105041-2130	105110-7762 [8-94392-233-2]		105019-2210	KBL2.4-S
41-2130	C	105041-2130	105110-8050 [8-97600-813-0]		105019-2200	KBL2.4-S
41-2130	C	105041-2130	105110-8051 [8-97600-813-1]		105019-2200	KBL2.4-S
41-2131	A	105041-2131	105110-7753 [8-94390-795-4]		105019-2200	KBL2.4-S
41-2131	B	105041-2131	105110-7763 [8-94392-233-2]		105019-2210	KBL2.4-S
41-2131	C	105041-2131	105110-8052 [8-97600-813-1]		105019-2200	KBL2.4-S
41-3020	1D	105041-3020	105110-7050 [ME076953]		105019-0220	KBL2.4-S
41-3020	2G	105041-3020	105110-7060 [ME076952]		105019-0230	KBL2.4-S
41-3030	1D	105041-3030	105110-7051 [ME076953]		105019-0220	KBL2.4-S
41-3030	1D	105041-3030	105110-7052 [ME076953]		105019-0220	KBL2.4-S
41-3030	2G	105041-3030	105110-7061 [ME076952]		105019-0230	KBL2.4-S
41-3030	2J	105041-3030	105110-7460 [ME075788]		105019-0361	KBL2.4-S
41-3030	2L	105041-3030	105110-7182 [ME075761]		105019-0371	KBL2.4-S
41-3030	2M	105041-3030	105110-7590 [ME072662]		105019-0800	KBL2.4-S
41-3030	5I	105041-3030	105110-7520 [ME072745]		105019-0690	KBL2.4-S
41-3030	5M	105041-3030	105110-7521 [ME072745]		105019-0690	KBL2.4-S
41-3031	1D	105041-3031	105110-7053 [ME076953]		105019-0220	KBL2.4-S
41-3031	2G	105041-3031	105110-7062 [ME076952]		105019-0230	KBL2.4-S
41-3031	2J	105041-3031	105110-7461 [ME075788]		105019-0361	KBL2.4-S
41-3031	2L	105041-3031	105110-7183 [ME075761]		105019-0371	KBL2.4-S
41-3031	2M	105041-3031	105110-7591 [ME072662]		105019-0800	KBL2.4-S
41-3031	5M	105041-3031	105110-7522 [ME072745]		105019-0690	KBL2.4-S
41-3051	J9	105041-3051	105110-7193 [16600-97116]		105019-0590	KBL2.4-S
41-3051	U3	105041-3051	105110-7194 [16600-97117]		105019-0591	KBL2.4-S
41-3060	G	105041-3060	105110-7210 [1-15300-309-0]		105019-2080	KBL2.4-S
41-3060	H	105041-3060	105110-7880 [1-15300-379-0]		105019-2380	KBL2.4-S

Note: \* The number in brackets [ ] is the manufacturer's part number.

1. Use the nozzle service kit for nozzle replacement of KBL2.3-S, KBL2.4-S and KBL2.4-P type nozzle holders.  
Never replace only the nozzle itself of these types.

# STAMPING & TYPE REFERENCE

Stamping mark	Discrimination mark	Nozzle holder part no.	Nozzle & nozzle holder assembly no.*	Nozzle part no. (Stamping mark)	Nozzle service kit no. <sup>1</sup>	Nozzle holder type
41-3060	J	105041-3060	105110-7881 [1-15300-379-1]		105019-2380	KBL2.4-S
41-3061	G	105041-3061	105110-7211 [1-15300-309-0]		105019-2080	KBL2.4-S
41-3061	J	105041-3061	105110-7882 [1-15300-379-2]		105019-2380	KBL2.4-S
41-3110	W	105041-3110	105110-7360 [ME075583]		105019-0340	KBL2.4-S
41-3120	5G	105041-3120	105110-7420 [ME075659]		105019-0650	KBL2.4-S
41-3120	5H	105041-3120	105110-7430 [ME075660]		105019-0660	KBL2.4-S
41-3150	U6	105041-3150	105110-7650 [16600-97160]		105019-0591	KBL2.4-S
41-3150	U6	105041-3150	105110-7651 [16600-97160]		105019-0591	KBL2.4-S
41-3150	U7	105041-3150	105110-7660 [16600-97161]		105019-0920	KBL2.4-S
41-3150	U7A	105041-3150	105110-7661 [16600-97161]		105019-0920	KBL2.4-S
41-3150	U7A	105041-3150	105110-7662 [16600-97161]		105019-0920	KBL2.4-S
41-3150	X5D	105041-3150	105110-7990 [16600-97177]		105019-2530	KBL2.4-S
41-3150	X5D	105041-3150	105110-7991 [16600-97177]		105019-2530	KBL2.4-S
41-3160	G	105041-3160	105110-7800 [1-15300-371-0]		105019-2300	KBL2.4-S
41-3160	H	105041-3160	105110-7810 [1-15300-372-0]		105019-2310	KBL2.4-S
41-3161	G	105041-3161	105110-7801 [1-15300-371-1]		105019-2300	KBL2.4-S
41-3161	H	105041-3161	105110-7811 [1-15300-372-1]		105019-2310	KBL2.4-S
41-3162	G	105041-3162	105110-7802 [1-15300-371-2]		105019-2301	KBL2.4-S
41-3162	H	105041-3162	105110-7812 [1-15300-372-2]		105019-2311	KBL2.4-S
41-3163	G	105041-3163	105110-7803 [1-15300-371-3]		105019-2301	KBL2.4-S
41-3163	H	105041-3163	105110-7813 [1-15300-372-3]		105019-2311	KBL2.4-S
41-3163	J	105041-3163	105110-7804 [1-15300-371-4]		105019-2302	KBL2.4-S
41-3163	K	105041-3163	105110-7814 [1-15300-372-4]		105019-2312	KBL2.4-S
41-3180	V5B	105041-3180	105110-7851 [16600-97168]		105019-2350	KBL2.4-S
41-3180	X1B	105041-3180	105110-7950 [16600-97173]		105019-2350	KBL2.4-S
41-3180	X1B	105041-3180	105110-7951 [16600-97173]		105019-2350	KBL2.4-S
41-3180	X2C	105041-3180	105110-7960 [16600-97174]		105019-2440	KBL2.4-S
41-3180	X2E	105041-3180	105110-7961 [16600-97174]		105019-2440	KBL2.4-S

Note: \* The number in brackets [ ] is the manufacturer's part number.

1. Use the nozzle service kit for nozzle replacement of KBL2.3-S, KBL2.4-S and KBL2.4-P type nozzle holders.  
Never replace only the nozzle itself of these types.

## STAMPING & TYPE REFERENCE

Stamping mark	Discrimination mark	Nozzle holder part no.	Nozzle & nozzle holder assembly no.*	Nozzle part no. (Stamping mark)	Nozzle service kit no. <sup>1</sup>	Nozzle holder type
41-3180	X2E	105041-3180	105110-7962 [16600-97174]		105019-2440	KBL2.4-S
41-3180	X4C	105041-3180	105110-7901 [16600-97176]		105019-2390	KBL2.4-S
41-3180	X6E	105041-3180	105110-8010 [16600-97178]		105019-2540	KBL2.4-S
41-3180	X6E	105041-3180	105110-8011 [16600-97178]		105019-2540	KBL2.4-S
41-3180	X7C	105041-3180	105110-8000 [16600-97179]		105019-2390	KBL2.4-S
41-3180	X7C	105041-3180	105110-8001 [16600-97179]		105019-2390	KBL2.4-S
41-3180	X8B	105041-3180	105110-8060 [16600-97200]		105019-2590	KBL2.4-S
41-3180	X8B	105041-3180	105110-8061 [16600-97200]		105019-2590	KBL2.4-S
41-3180	X9C	105041-3180	105110-8070 [16600-97201]		105019-2600	KBL2.4-S
41-3180	X9C	105041-3180	105110-8071 [16600-97201]		105019-2600	KBL2.4-S
41-3180	Y1E	105041-3180	105110-8090 [16600-97202]		105019-2640	KBL2.4-S
41-3180	Y1E	105041-3180	105110-8091 [16600-97202]		105019-2640	KBL2.4-S
41-3180	Y2B	105041-3180	105110-8062 [16600-ND000]		105019-2591	KBL2.4-S
41-3180	Y3C	105041-3180	105110-8072 [16600-ND001]		105019-2601	KBL2.4-S
41-3180	Y4E	105041-3180	105110-8092 [16600-ND002]		105019-2641	KBL2.4-S
41-3190	V6C	105041-3190	105110-7861 [16600-97169]		105019-2360	KBL2.4-S
41-3200	A	105041-3200	105110-8040 [ME180464]		105019-2570	KBL2.4-S
41-3200	B	105041-3200	105110-8041 [ME180464]		105019-2570	KBL2.4-S
41-4020	A	105041-4020	105110-7540 [---]		105019-2910	KBL2.4-S
41-4020	E4	105041-4020	105110-7290 [16600-97108]		105019-0630	KBL2.4-S
41-4020	E6	105041-4020	105110-7040 [16600 97078]		105019-0240	KBL2.4-S
41-4020	E7	105041-4020	105110-7070 [16600 97079]		105019-0250	KBL2.4-S
41-4020	E9	105041-4020	105110-7300 [16600-97109]		105019-0640	KBL2.4-S
41-4020	J1	105041-4020	105110-7131 [16600-97102]		105019-0451	KBL2.4-S
41-4020	J8	105041-4020	105110-7442 [16600-97112]		105019-0600	KBL2.4-S
41-4020	N5	105041-4020	105110-7312 [16600 95505]		105019-0481	KBL2.4-S
41-4020	U1	105041-4020	105110-7132 [16600-97114]		105019-0451	KBL2.4-S
41-4020	U2	105041-4020	105110-7282 [16600 97115]		105019-0461	KBL2.4-S

Note: \* The number in brackets [ ] is the manufacturer's part number.

1. Use the nozzle service kit for nozzle replacement of KBL2.3-S, KBL2.4-S and KBL2.4-P type nozzle holders.  
Never replace only the nozzle itself of these types.

## STAMPING & TYPE REFERENCE

Stamping mark	Discrimination mark	Nozzle holder part no.	Nozzle & nozzle holder assembly no.*	Nozzle part no. (Stamping mark)	Nozzle service kit no. <sup>1</sup>	Nozzle holder type
41-4030	6	105041-4030	105110-7080 [ME150479]		105019-0320	KBL2.4-S
41-4040	R	105041-4040	105110-7090 [1-15300-320-0]		105019-0290	KBL2.4-S
41-4041	R	105041-4041	105110-7091 [1-15300-320-0]		105019-0290	KBL2.4-S
41-4050	6A	105041-4050	105110-7330 [ME093528]		105019-0510	KBL2.4-S
41-4060	H6	105041-4060	105110-7152 [16600 96604]		105019-0471	KBL2.4-S
41-4080	2A	105041-4080	105110-7250 [ME150945]		105019-0420	KBL2.4-S
41-4100	A	105041-4100	105110-7390 [ME161933]		105019-0380	KBL2.4-S
41-4100	D	105041-4100	105110-7400 [ME161934]		105019-0500	KBL2.4-S
41-4100	E	105041-4100	105110-7340 [ME121324]		105019-0400	KBL2.4-S
41-4100	F	105041-4100	105110-7350 [ME121325]		105019-0410	KBL2.4-S
41-4101	A	105041-4101	105110-7391 [ME161933]		105019-0380	KBL2.4-S
41-4101	D	105041-4101	105110-7401 [ME161934]		105019-0500	KBL2.4-S
41-4101	E	105041-4101	105110-7341 [ME121324]		105019-0400	KBL2.4-S
41-4101	F	105041-4101	105110-7351 [ME121325]		105019-0410	KBL2.4-S
41-4110	1A	105041-4110	105110-7410 [ME151252]		105019-0430	KBL2.4-S
41-4110	1C	105041-4110	105110-7570 [ME152406]		105019-0780	KBL2.4-S
41-4110	2A	105041-4110	105110-7251 [ME150945]		105019-0420	KBL2.4-S
41-4110	2B	105041-4110	105110-7370 [ME151161]		105019-0330	KBL2.4-S
41-4110	2J	105041-4110	105110-8121 [ME440089]		105019-2670	KBL2.4-S
41-4110	P	105041-4110	105110-8120 [ME440089]		105019-2670	KBL2.4-S
41-4111	1A	105041-4111	105110-7411 [ME151252]		105019-0430	KBL2.4-S
41-4111	2A	105041-4111	105110-7252 [ME150945]		105019-0420	KBL2.4-S
41-4111	2B	105041-4111	105110-7371 [ME151161]		105019-0330	KBL2.4-S
41-4111	2J	105041-4111	105110-8122 [ME440089]		105019-2670	KBL2.4-S
41-4120	5A	105041-4120	105110-7381 [ME093732]		105019-0350	KBL2.4-S
41-4120	5B	105041-4120	105110-7450 [ME093733]		105019-0620	KBL2.4-S
41-4120	5D	105041-4120	105110-7600 [ME094846]		105019-0820	KBL2.4-S
41-4120	6A	105041-4120	105110-7331 [ME093528]		105019-0510	KBL2.4-S

Note: \* The number in brackets [ ] is the manufacturer's part number.

1. Use the nozzle service kit for nozzle replacement of KBL2.3-S, KBL2.4-S and KBL2.4-P type nozzle holders.  
Never replace only the nozzle itself of these types.

## STAMPING & TYPE REFERENCE

Stamping mark	Discrimination mark	Nozzle holder part no.	Nozzle & nozzle holder assembly no.*	Nozzle part no. (Stamping mark)	Nozzle service kit no. <sup>1</sup>	Nozzle holder type
41-4120	6A	105041-4120	105110-7332 [ME093528]		105019-0510	KBL2.4-S
41-4120	6D	105041-4120	105110-7710 [ME095125]		105019-2010	KBL2.4-S
41-4120	6E	105041-4120	105110-7610 [ME094936]		105019-0830	KBL2.4-S
41-4120	6H	105041-4120	105110-7711 [ME095125]		105019-2010	KBL2.4-S
41-4120	D7	105041-4120	105110-7500 [ME094539]		105019-2110	KBL2.4-S
41-4121	5A	105041-4121	105110-7382 [ME093732]		105019-0350	KBL2.4-S
41-4121	5B	105041-4121	105110-7451 [ME093733]		105019-0620	KBL2.4-S
41-4121	5D	105041-4121	105110-7601 [ME094846]		105019-0820	KBL2.4-S
41-4121	6A	105041-4121	105110-7333 [ME093528]		105019-0510	KBL2.4-S
41-4121	6E	105041-4121	105110-7611 [ME094936]		105019-0830	KBL2.4-S
41-4121	6H	105041-4121	105110-7712 [ME095125]		105019-2010	KBL2.4-S
41-4121	D7	105041-4121	105110-7502 [ME094539]		105019-2110	KBL2.4-S
41-4130	1B	105041-4130	105110-7510 [ME158200]		105019-0680	KBL2.4-S
41-4130	2D	105041-4130	105110-7480 [ME158082]		105019-2090	KBL2.4-S
41-4130	2E	105041-4130	105110-7490 [ME158153]		105019-2100	KBL2.4-S
41-4130	2F	105041-4130	105110-7550 [ME158263]		105019-0700	KBL2.4-S
41-4130	6	105041-4130	105110-7081 [ME150479]		105019-0320	KBL2.4-S
41-4131	1B	105041-4131	105110-7511 [ME158200]		105019-0680	KBL2.4-S
41-4131	2D	105041-4131	105110-7481 [ME158082]		105019-2090	KBL2.4-S
41-4131	2E	105041-4131	105110-7491 [ME158153]		105019-2100	KBL2.4-S
41-4131	2F	105041-4131	105110-7551 [ME158263]		105019-0700	KBL2.4-S
41-4131	6	105041-4131	105110-7082 [ME150479]		105019-0320	KBL2.4-S
41-4140	-	105041-4140	105110-7530 [8-94390-519-0]		105019-0760	KBL2.4-S
41-4140	-	105041-4140	105110-7531 [8-94390-519-1]		105019-0760	KBL2.4-S
41-4141	-	105041-4141	105110-7532 [8-94390-519-1]		105019-0760	KBL2.4-S
41-4150	2	105041-4150	105110-7560 [1-15300-336-0]		105019-0770	KBL2.4-S
41-4150	A	105041-4150	105110-7561 [1-15300-336-1]		105019-2150	KBL2.4-S
41-4151	C	105041-4151	105110-7562 [1-15300-401-0]		105019-2150	KBL2.4-S

Note: \* The number in brackets [ ] is the manufacturer's part number.

1. Use the nozzle service kit for nozzle replacement of KBL2.3-S, KBL2.4-S and KBL2.4-P type nozzle holders.  
Never replace only the nozzle itself of these types.

# STAMPING & TYPE REFERENCE

Stamping mark	Discrimination mark	Nozzle holder part no.	Nozzle & nozzle holder assembly no.*	Nozzle part no. (Stamping mark)	Nozzle service kit no. <sup>1</sup>	Nozzle holder type
41-4152	C	105041-4152	105110-7563 [1-15300-401-0]		105019-2150	KBL2.4-S
41-4160	3E	105041-4160	105110-7580 [1-15300-359-0]		105019-0790	KBL2.4-S
41-4160	B	105041-4160	105110-7730 [1-15300-369-0]		105019-2180	KBL2.4-S
41-4161	3E	105041-4161	105110-7581 [1-15300-359-0]		105019-0790	KBL2.4-S
41-4161	B	105041-4161	105110-7731 [1-15300-369-0]		105019-2180	KBL2.4-S
41-4180	N6	105041-4180	105110-7640 [16600-95506]		105019-0910	KBL2.4-S
41-4180	U4	105041-4180	105110-7680 [16600-97118]		105019-0950	KBL2.4-S
41-4180	U5	105041-4180	105110-7630 [16600-97119]		105019-0900	KBL2.4-S
41-4180	U9	105041-4180	105110-7700 [16600-97163]		105019-2000	KBL2.4-S
41-4190	K2	105041-4190	105110-7670 [16600-96611]		105019-0471	KBL2.4-S
41-4190	K5	105041-4190	105110-7720 [16600-96614]		105019-0471	KBL2.4-S
41-4190	L1	105041-4190	105110-8020 [---]		105019-2550	KBL2.4-S
41-4200	E9	105041-4200	105110-7690 [16600-Z5672]		105019-0960	KBL2.4-S
41-4200	F8	105041-4200	105110-7770 [16600-Z5677]		105019-2230	KBL2.4-S
41-4270	B	105041-4270	105110-7830 [1-15300-345-0]		105019-2330	KBL2.4-S
41-4280	V4	105041-4280	105110-7840 [16600-97167]		105019-2340	KBL2.4-S
41-4280	V7	105041-4280	105110-7870 [16600-97170]		105019-2370	KBL2.4-S
41-4280	X3	105041-4280	105110-7910 [16600-97175]		105019-2400	KBL2.4-S
41-4290	G	105041-4290	105110-7920 [ME164355]		105019-2410	KBL2.4-S
41-4300	5E	105041-4300	105110-7930 [ME095654]		105019-2420	KBL2.4-S
41-4301	5E	105041-4301	105110-7931 [ME095654]		105019-2420	KBL2.4-S
41-4310	K9	105041-4310	105110-7970 [16600-96617]		105019-2480	KBL2.4-S
41-4310	L0	105041-4310	105110-7980 [16600-96618]		105019-2510	KBL2.4-S
41-4310	L4	105041-4310	105110-8100 [16600-96662]		105019-2650	KBL2.4-S
41-4320	E	105041-4320	105110-8130 [1-15300-402-0]		105019-2330	KBL2.4-S
41-4321	E	105041-4321	105110-8131 [1-15300-402-1]		105019-2330	KBL2.4-S
41-4340	-	105041-4340	105110-8170 [1-15300-393-0]		105019-2700	KBL2.4-S
41-4340	A	105041-4340	105110-8171 [1-15300-393-1]		105019-2701	KBL2.4-S

Note: \* The number in brackets [ ] is the manufacturer's part number.

1. Use the nozzle service kit for nozzle replacement of KBL2.3-S, KBL2.4-S and KBL2.4-P type nozzle holders.  
Never replace only the nozzle itself of these types.



## STAMPING & TYPE REFERENCE

Stamping mark	Discrimination mark	Nozzle holder part no.	Nozzle & nozzle holder assembly no.*	Nozzle part no. (Stamping mark)	Nozzle service kit no. <sup>1</sup>	Nozzle holder type
41-4341	A	105041-4341	105110-8172 [1-15300-393-2]		105019-2701	KBL2.4-S
41-4341	B	105041-4341	105110-8250 [1-15300-423-0]		105019-2790	KBL2.4-S
41-4350	-	105041-4350	105110-8150 [---]		105019-2690	KBL2.4-S
41-4360	-	105041-4360	105110-8180 [1-15300-392-0]		105019-2710	KBL2.4-S
41-4360	F	105041-4360	105110-8220 [1-15300-417-0]		105019-2760	KBL2.4-S
41-4361	A	105041-4361	105110-8181 [1-15300-392-1]		105019-2710	KBL2.4-S
41-4361	B	105041-4361	105110-8182 [1-15300-392-2]		105019-2710	KBL2.4-S
41-4361	F	105041-4361	105110-8221 [1-15300-417-0]		105019-2760	KBL2.4-S
41-4370	-	105041-4370	105110-8200 [1-15300-413-0]		105019-2730	KBL2.4-S
41-4371	-	105041-4371	105110-8201 [1-15300-413-0]		105019-2730	KBL2.4-S
41-4390	-	105041-4390	105110-8240 [33800-83401]		105019-2690	KBL2.4-S
41-4390	A	105041-4390	105110-8320 [33800-83500]		105019-2850	KBL2.4-S
41-4390	B	105041-4390	105110-8350 [33800-83450]		105019-2940	KBL2.4-S
41-4400	-	105041-4400	105110-8260 [1-15300-424-0]		105019-2800	KBL2.4-S
41-4410	A	105041-4410	105110-8280 [1-15300-425-0]		105019-2820	KBL2.4-S
41-4410	E	105041-4410	105110-8341 [1-15300-432-1]		105019-2900	KBL2.4-S
41-4420	F	105041-4420	105100-7661 [ME056731]	105015-7790 (NP-DLLA150SN779)	-	KBL2.1-S
48-2030	-	105048-2030	105118-7000 [8-94474-389-2]	105017-0500 (NP-DLLA150PN050)	-	KBL2.1-P
48-2030	C	105048-2030	105118-7001 [8-94474-389-3]	105017-0441 (NP-DLLA150PN044)	-	KBL2.1-P
48-2031	C	105048-2031	105118-7002 [8-94474-389-4]	105017-0441 (NP-DLLA150PN044)	-	KBL2.1-P
48-2031	H	105048-2031	105118-7042 [8-94328-090-3]	105017-0820 (NP-DLSA154PN082)	-	KBL2.1-P
48-2031	J	105048-2031	105118-7101 [8-97018-945-1]	105017-1140 (NP-DLSA154PN114)	-	KBL2.1-P
48-2080	A	105048-2080	105118-7070 [16410-ZG5-0230]	105017-0930 (NP-DLLA155PN093)	-	KBL2.2-P
48-2080	E3	105048-2080	105118-7080 [16410-ZG3-8010-M1]	105017-1020 (NP-DLLA157PN102)	-	KBL2.2-P
48-2080	G3	105048-2080	105118-7020 [16410-ZG3-0130]	105017-0790 (NP-DLLA155PN079)	-	KBL2.2-P
48-2080	G5	105048-2080	105118-7030 [16410-ZG5-0030]	105017-0800 (NP-DLLA155PN080)	-	KBL2.2-P
48-2081	A	105048-2081	105118-7071 [16410-ZG5-0230]	105017-0930 (NP-DLLA155PN093)	-	KBL2.2-P
48-2081	E3	105048-2081	105118-7081 [16410-ZG3-8010-M1]	105017-1020 (NP-DLLA157PN102)	-	KBL2.2-P

Note: \* The number in brackets [ ] is the manufacturer's part number.

1. Use the nozzle service kit for nozzle replacement of KBL2.3-S, KBL2.4-S and KBL2.4-P type nozzle holders.  
Never replace only the nozzle itself of these types.

## STAMPING & TYPE REFERENCE

Stamping mark	Discrimination mark	Nozzle holder part no.	Nozzle & nozzle holder assembly no.*	Nozzle part no. (Stamping mark)	Nozzle service kit no. <sup>1</sup>	Nozzle holder type
48-2081	G3	105048-2081	105118-7021 [16410-ZG3-0130]	105017-0790 (NP-DLLA155PN079)	-	KBL2.2-P
48-2081	Q	105048-2081	105118-7190 [---]	105017-1570 (NP-DLLA155PN157)	-	KBL2.2-P
48-2081	T	105048-2081	105118-7270 [16410-ZG5-0330]	105017-1990 (NP-DLLA155PN199)	-	KBL2.2-P
48-2090	-	105048-2090	105118-7041 [8-94328-090-2]	105017-0820 (NP-DSAL154PN082)	-	KBL2.1-P
48-2090	A	105048-2090	105118-7040 [8-94328-090-1]	105017-0820 (NP-DSLA154PN082)	-	KBL2.1-P
48-2100	-	105048-2100	105118-7090 [228-63202-00]	105017-1060 (NP-DLLA150PN106)	-	KBL2.2-P
48-2110	-	105048-2110	105118-7100 [8-97018-945-0]	105017-1140 (NP-DSLA154PN114)	-	KBL2.1-P
48-2130	-	105048-2130	105118-7130 [6215-300-013-1A]	105017-1290 (NP-DLLA160PN129)	-	KBL2.2-P
48-2150	-	105048-2150	105118-7170 [6215-300-018-0A]		105019-1040	KBL2.4-P side feed
48-2150	A	105048-2150	105118-7240 [6215-300-028-0]		105019-1060	KBL2.4-P side feed
48-2151	-	105048-2151	105118-7171 [6215-300-018-0B]		105019-1040	KBL2.4-P side feed
48-2151	A	105048-2151	105118-7241 [6215-300-028-0A]		105019-1060	KBL2.4-P side feed
48-2152	-	105048-2152	105118-7172 [6215-300-018-0D]		105019-1040	KBL2.4-P side feed
48-2152	A	105048-2152	105118-7242 [6215-300-028-0C]		105019-1060	KBL2.4-P side feed
48-2152	B	105048-2152	105118-8270 [6215-300-041-0]		105019-1340	KBL2.4-P side feed
48-2170	-	105048-2170	105118-7280 [6215-300-029-0F]		105019-1100	KBL2.4-P side feed
48-2171	-	105048-2171	105118-7281 [6215-300-029-0G]		105019-1100	KBL2.4-P side feed
48-2171	A	105048-2171	105118-7560 [6215-300-039]		105019-1220	KBL2.4-P side feed
48-2200	-	105048-2200	105118-7371 [8-97192-333-1]		105019-1260	KBL2.4-P side feed
48-2201	-	105048-2201	105118-7372 [8-97192-333-2]		105019-1260	KBL2.4-P side feed
48-2201	-	105048-2201	105118-7373 [8-97382-945-0]		105019-1260	KBL2.4-P side feed
48-2220	B1	105048-2220	105118-7632 [1G911-53003]		105019-1370	KBL2.4-P side feed
48-2220	J	105048-2220	105118-8190 [1G730-53001]		105019-1390	KBL2.4-P side feed
48-2220	L	105048-2220	105118-8200 [1G720-53001]		105019-1400	KBL2.4-P side feed
48-2220	T	105048-2220	105118-8010 [1G790-53002]		105019-1380	KBL2.4-P side feed
48-2221	A1	105048-2221	105118-8360 [1G918-53001]		105019-1800	KBL2.4-P side feed
48-2221	A2	105048-2221	105118-8370 [1G796-53001]		105019-1810	KBL2.4-P side feed
48-2221	A3	105048-2221	105118-8380 [1G861-53001]		105019-1400	KBL2.4-P side feed

Note: \* The number in brackets [ ] is the manufacturer's part number.

1. Use the nozzle service kit for nozzle replacement of KBL2.3-S, KBL2.4-S and KBL2.4-P type nozzle holders.  
Never replace only the nozzle itself of these types.

## STAMPING & TYPE REFERENCE

Stamping mark	Discrimination mark	Nozzle holder part no.	Nozzle & nozzle holder assembly no.*	Nozzle part no. (Stamping mark)	Nozzle service kit no. <sup>1</sup>	Nozzle holder type
48-2221	A4	105048-2221	105118-8410 [1G924-53001]		105019-1830	KBL2.4-P side feed
48-2221	A4	105048-2221	105118-8411 [1G924-53002]		105019-1830	KBL2.4-P side feed
48-2221	A5	105048-2221	105118-8371 [1G796-53002]		105019-1810	KBL2.4-P side feed
48-2221	A6	105048-2221	105118-8381 [1G861-53002]		105019-1400	KBL2.4-P side feed
48-2221	A8	105048-2221	105118-8361 [1G918-53001]		105019-1800	KBL2.4-P side feed
48-2221	A9	105048-2221	105118-8430 [1G173-53001]		105019-1840	KBL2.4-P side feed
48-2221	B1	105048-2221	105118-7633 [1G911-53003]		105019-1370	KBL2.4-P side feed
48-2221	J	105048-2221	105118-8191 [1G730-53001]		105019-1390	KBL2.4-P side feed
48-2221	L	105048-2221	105118-8201 [1G720-53001]		105019-1400	KBL2.4-P side feed
48-2221	T	105048-2221	105118-8011 [1G790-53002]		105019-1380	KBL2.4-P side feed
48-2222	A4	105048-2222	105118-8412 [1G924-53003]		105019-1830	KBL2.4-P side feed
48-2222	A5	105048-2222	105118-8372 [1G796-53003]		105019-1810	KBL2.4-P side feed
48-2222	A6	105048-2222	105118-8382 [1G861-53003]		105019-1400	KBL2.4-P side feed
48-2222	A7	105048-2222	105118-8450 [1G919-53001]		105019-1880	KBL2.4-P side feed
48-2222	A8	105048-2222	105118-8362 [1G918-53002]		105019-1800	KBL2.4-P side feed
48-2222	A9	105048-2222	105118-8431 [1G173-53002]		105019-1840	KBL2.4-P side feed
48-2222	B1	105048-2222	105118-7634 [1G911-53004]		105019-1370	KBL2.4-P side feed
48-2222	J	105048-2222	105118-8192 [1G730-53002]		105019-1390	KBL2.4-P side feed
48-2222	L	105048-2222	105118-8202 [1G720-53002]		105019-1400	KBL2.4-P side feed
48-2222	T	105048-2222	105118-8012 [1G790-53003]		105019-1380	KBL2.4-P side feed
48-2230	A	105048-2230	105118-7720 [8-97217-642-0]		105019-1540	KBL2.4-P side feed
48-2231	A	105048-2231	105118-7721 [8-97217-642-0]		105019-1540	KBL2.4-P side feed
48-2231	A	105048-2231	105118-7722 [8-97382-946-0]		105019-1540	KBL2.4-P side feed
48-2300	-	105048-2300	105118-8290 [8-97327-244-0]		105019-1350	KBL2.4-P side feed
48-2300	-	105048-2300	105118-8291 [8-97388-738-0]		105019-1350	KBL2.4-P side feed
48-3720	-	105048-3720	105118-7110 [1-15300-279-0]		105019-1010	KBL2.4-P side feed
48-3720	Z	105048-3720	105118-7120 [8-94393-326-0]		105019-1000	KBL2.4-P side feed
48-3721	-	105048-3721	105118-7111 [1-15300-279-1]		105019-1010	KBL2.4-P side feed

Note: \* The number in brackets [ ] is the manufacturer's part number.

1. Use the nozzle service kit for nozzle replacement of KBL2.3-S, KBL2.4-S and KBL2.4-P type nozzle holders.  
Never replace only the nozzle itself of these types.

# STAMPING & TYPE REFERENCE

Stamping mark	Discrimination mark	Nozzle holder part no.	Nozzle & nozzle holder assembly no.*	Nozzle part no. (Stamping mark)	Nozzle service kit no. <sup>1</sup>	Nozzle holder type
48-3721	Z	105048-3721	105118-7121 [8-94393-326-1]		105019-1000	KBL2.4-P side feed
48-3722	-	105048-3722	105118-7112 [1-15300-279-1]		105019-1010	KBL2.4-P side feed
48-3722	Z	105048-3722	105118-7122 [8-94393-326-1]		105019-1000	KBL2.4-P side feed
48-3723	-	105048-3723	105118-7113 [1-15300-279-2]		105019-1010	KBL2.4-P side feed
48-3723	Z	105048-3723	105118-7123 [8-94393-326-2]		105019-1000	KBL2.4-P side feed
48-3830	-	105048-3830	105118-7160 [8-97078-928-0]		105019-1030	KBL2.4-P side feed
48-3830	A	105048-3830	105118-7230 [8-97115-503-0]		105019-1070	KBL2.4-P side feed
48-3831	-	105048-3831	105118-7161 [8-97114-315-0]		105019-1030	KBL2.4-P side feed
48-3831	-	105048-3831	105118-7162 [8-97114-315-1]		105019-1030	KBL2.4-P side feed
48-3831	-	105048-3831	105118-7163 [8-97114-315-1]		105019-1030	KBL2.4-P side feed
48-3831	A	105048-3831	105118-7231 [8-97115-503-0]		105019-1070	KBL2.4-P side feed
48-3831	A	105048-3831	105118-7232 [8-97115-503-1]		105019-1070	KBL2.4-P side feed
48-3831	H	105048-3831	105118-7340 [8-97200-570-0]		105019-1160	KBL2.4-P side feed
48-3832	-	105048-3832	105118-7164 [8-97114-315-2]		105019-1420	KBL2.4-P side feed
48-3832	A	105048-3832	105118-7233 [8-97115-503-2]		105019-1430	KBL2.4-P side feed
48-3832	B	105048-3832	105118-7480 [5-86702-649-0]		105019-1450	KBL2.4-P side feed
48-3832	C	105048-3832	105118-7530 [5-86705-240-0]		105019-1460	KBL2.4-P side feed
48-3832	E	105048-3832	105118-7470 [5-86702-648-0]		105019-1440	KBL2.4-P side feed
48-3832	F	105048-3832	105118-7542 [8-97200-570-3]		105019-1470	KBL2.4-P side feed
48-3880	-	105048-3880	105118-7180 [8-94394-906-0]		105019-1020	KBL2.4-P side feed
48-3881	-	105048-3881	105118-7181 [8-94394-906-0]		105019-1020	KBL2.4-P side feed
48-3882	-	105048-3882	105118-7182 [8-94394-906-1]		105019-1020	KBL2.4-P side feed
48-3883	-	105048-3883	105118-7183 [8-94394-906-1]		105019-1510	KBL2.4-P side feed
48-3883	Y	105048-3883	105118-7114 [1-15300-279-2]		105019-1490	KBL2.4-P side feed
48-3883	Z	105048-3883	105118-7124 [8-94393-326-2]		105019-1500	KBL2.4-P side feed
48-3920	-	105048-3920	105118-7200 [ME015236]		105019-1130	KBL2.4-P top feed
48-3920	-	105048-3920	105118-7201 [ME015236]		105019-1130	KBL2.4-P top feed
48-3970	E1	105048-3970	105118-7262 [16600-Z5663]		105019-1080	KBL2.4-P side feed

Note: \* The number in brackets [ ] is the manufacturer's part number.

1. Use the nozzle service kit for nozzle replacement of KBL2.3-S, KBL2.4-S and KBL2.4-P type nozzle holders.  
Never replace only the nozzle itself of these types.

## STAMPING & TYPE REFERENCE

Stamping mark	Discrimination mark	Nozzle holder part no.	Nozzle & nozzle holder assembly no.*	Nozzle part no. (Stamping mark)	Nozzle service kit no. <sup>1</sup>	Nozzle holder type
48-4010	-	105048-4010	105118-7210 [16600-7T400]		105019-1140	KBL2.4-P top feed
48-4020	M3	105048-4020	105118-7251 [16600-Z6003]		105019-1090	KBL2.4-P side feed
48-4020	M4	105048-4020	105118-7252 [16600-Z6003]		105019-1090	KBL2.4-P side feed
48-4020	M5	105048-4020	105118-7290 [16600-Z6004]		105019-1110	KBL2.4-P side feed
48-4070	E5	105048-4070	105118-7300 [16600-Z5667]		105019-1080	KBL2.4-P side feed
48-4071	E5	105048-4071	105118-7301 [16600-Z5667]		105019-1080	KBL2.4-P side feed
48-4080	M6	105048-4080	105118-7310 [16600-Z6005]		105019-1110	KBL2.4-P side feed
48-4081	M6	105048-4081	105118-7311 [16600-Z6005]		105019-1110	KBL2.4-P side feed
48-4100	A		105118-7320 [16600 AD200]			KBL2.5-P
48-4100	B		105118-7321 [16600 AD200]			KBL2.5-P
48-4100	B		105118-7440 [16600 AD225]			KBL2.5-P
48-4100	G		105118-7740 [16600 WD001]			KBL2.5-P
48-4100	H		105118-7740 [16600 WD001]			KBL2.5-P
48-4100	J		105118-7510 [16600 5M300]			KBL2.5-P
48-4100	L		105118-7322 [16600 AD204]			KBL2.5-P
48-4100	M		105118-8070 [16600 AD210]			KBL2.5-P
48-4100	M		105118-8071 [16600 AD210]			KBL2.5-P
48-4100	N		105118-7880 [16600 5M310]			KBL2.5-P
48-4100	P		105118-8150 [16600 VK500]			KBL2.5-P
48-4100	P		105118-8151 [16600 VK500]			KBL2.5-P
48-4100	R		105118-7520 [16600 WD000]			KBL2.5-P
48-4100	S		105118-7322 [16600 AD203]			KBL2.5-P
48-4100	S		105118-7640 [A6600 AD201]			KBL2.5-P
48-4100	L		105118-7640 [A6600 AD201]			KBL2.5-P
48-4100	X		105118-7930 [16600 5M311]			KBL2.5-P
48-4100	Y		105118-7930 [16600 5M311]			KBL2.5-P
48-4120	E		105118-7620 [16600 7T100]			KBL2.5-P
48-4120	E		105118-7621 [16600 7T100]			KBL2.5-P

Note: \* The number in brackets [ ] is the manufacturer's part number.

1. Use the nozzle service kit for nozzle replacement of KBL2.3-S, KBL2.4-S and KBL2.4-P type nozzle holders.  
Never replace only the nozzle itself of these types.

# STAMPING & TYPE REFERENCE

Stamping mark	Discrimination mark	Nozzle holder part no.	Nozzle & nozzle holder assembly no.*	Nozzle part no. (Stamping mark)	Nozzle service kit no. <sup>1</sup>	Nozzle holder type
48-4120	F		105118-7330 [16600 2W200]			KBL2.5-P
48-4120	G		105118-7910 [16600 VG100]			KBL2.5-P
48-4120	H		105118-7910 [16600 VG100]			KBL2.5-P
48-4120	S		105118-7331 [16600 2W200]			KBL2.5-P
48-4120	L		105118-7331 [16600 2W200]			KBL2.5-P
48-4120	T		105118-7911 [16600 VG101]			KBL2.5-P
48-4120	U		105118-7911 [16600 VG101]			KBL2.5-P
48-4120	V		105118-8310 [16600 9S000]			KBL2.5-P
48-4120	Z		105118-8310 [16600 9S000]			KBL2.5-P
48-4120	W		105118-8420 [16600 VX400]			KBL2.5-P
48-4120	X		105118-8420 [16600 VX400]			KBL2.5-P
48-4180	G2	105048-4180	105118-7400 [16600-Z5700]		105019-1560	KBL2.4-P side feed
48-4180	H1	105048-4180	105118-7580 [16600-Z5706]		105019-1620	KBL2.4-P side feed
48-4190	G3	105048-4190	105118-7410 [16600-Z5701]		105019-1570	KBL2.4-P side feed
48-4190	G4	105048-4190	105118-7420 [16600-Z5702]		105019-1580	KBL2.4-P side feed
48-4190	H0	105048-4190	105118-7570 [16600-Z5704]		105019-1610	KBL2.4-P side feed
48-4190	H2	105048-4190	105118-7590 [16600-Z5707]		105019-1630	KBL2.4-P side feed
48-4190	H3	105048-4190	105118-7600 [16600-Z5708]		105019-1640	KBL2.4-P side feed
48-4200	M7	105048-4200	105118-7430 [16600-Z6006]		105019-1590	KBL2.4-P side feed
48-4200	M8	105048-4200	105118-7610 [16600-Z6007]		105019-1650	KBL2.4-P side feed
48-4210	-	105048-4210	105118-7380 [272-63201-00]		105019-1550	KBL2.4-P top feed
48-4280	-	105048-4280	105118-7460 [5-86702-647-0]		105019-1170	KBL2.4-P side feed
48-4280	E	105048-4280	105118-7540 [8-97200-570-1]		105019-1210	KBL2.4-P side feed
48-4280	F	105048-4280	105118-7541 [8-97200-570-2]		105019-1211	KBL2.4-P side feed
48-4300	B	105048-4300	105118-7551 [8-97209-863-1]		105019-1600	KBL2.4-P side feed
48-4300	E	105048-4300	105118-7800 [8-97224-388-0]		105019-1700	KBL2.4-P side feed
48-4300	F	105048-4300	105118-7810 [8-97224-389-0]		105019-1710	KBL2.4-P side feed
48-4300	H	105048-4300	105118-7950 [8-97235-539-0]		105019-1770	KBL2.4-P side feed

Note: \* The number in brackets [ ] is the manufacturer's part number.

1. Use the nozzle service kit for nozzle replacement of KBL2.3-S, KBL2.4-S and KBL2.4-P type nozzle holders.  
Never replace only the nozzle itself of these types.

## STAMPING & TYPE REFERENCE

Stamping mark	Discrimination mark	Nozzle holder part no.	Nozzle & nozzle holder assembly no.*	Nozzle part no. (Stamping mark)	Nozzle service kit no. <sup>1</sup>	Nozzle holder type
48-4300	J	105048-4300	105118-7960 [8-97235-540-0]		105019-1780	KBL2.4-P side feed
48-4300	K	105048-4300	105118-7970 [8-97235-541-0]		105019-1790	KBL2.4-P side feed
48-4300	L	105048-4300	105118-7901 [8-97226-680-1]		105019-1760	KBL2.4-P side feed
48-4310	91	105048-4310	105118-7820 [ME215091]		105019-1230	KBL2.4-P top feed
48-4310	91	105048-4310	105118-7821 [ME215091]		105019-1230	KBL2.4-P top feed
48-4350	H5	105048-4350	105118-7680 [16600-Z5710]		105019-1660	KBL2.4-P side feed
48-4350	K0	105048-4350	105118-7890 [16600-Z5715]		105019-1750	KBL2.4-P side feed
48-4350	K3	105048-4350	105118-8330 [16600-4K001]		105019-1520	KBL2.4-P side feed
48-4360	H6	105048-4360	105118-7690 [16600-Z5711]		105019-1670	KBL2.4-P side feed
48-4360	H7	105048-4360	105118-7700 [16600-Z5712]		105019-1680	KBL2.4-P side feed
48-4360	H8	105048-4360	105118-7870 [16600-Z5713]		105019-1740	KBL2.4-P side feed
48-4360	H8	105048-4360	105118-7871 [16600-Z5713]		105019-1820	KBL2.4-P side feed
48-4360	H9	105048-4360	105118-7850 [16600-Z5714]		105019-1720	KBL2.4-P side feed
48-4360	K2	105048-4360	105118-8140 [16600-Z5761]		105019-1870	KBL2.4-P side feed
48-4370	M9	105048-4370	105118-7710 [16600-Z6008]		105019-1690	KBL2.4-P side feed
48-4390	G		105118-7790 [16600 WD002]			KBL2.5-P
48-4390	H		105118-7790 [16600 WD002]			KBL2.5-P
48-4390	G		105118-7920 [16600 WD025]			KBL2.5-P
48-4390	H		105118-7920 [16600 WD025]			KBL2.5-P
48-4391	A		105118-8080 [16600 WD003]			KBL2.5-P
48-4391	B		105118-8080 [16600 WD003]			KBL2.5-P
48-4391	E		105118-8090 [16600 5M312]			KBL2.5-P
48-4391	E		105118-8091 [16600 5M312]			KBL2.5-P
48-4391	G		105118-7791 [16600 WD002]			KBL2.5-P
48-4391	H		105118-7791 [16600 WD002]			KBL2.5-P
48-4391	X		105118-7931 [16600 5M311]			KBL2.5-P
48-4391	Y		105118-7931 [16600 5M311]			KBL2.5-P
48-4400	A0	105048-4400	105118-7860 [16600-31D01]	105017-9190 (NP-DSLA147PN919)	105019-1730	KBL2.4-P top feed

Note: \* The number in brackets [ ] is the manufacturer's part number.

1. Use the nozzle service kit for nozzle replacement of KBL2.3-S, KBL2.4-S and KBL2.4-P type nozzle holders.  
Never replace only the nozzle itself of these types.

## STAMPING & TYPE REFERENCE

Stamping mark	Discrimination mark	Nozzle holder part no.	Nozzle & nozzle holder assembly no.*	Nozzle part no. (Stamping mark)	Nozzle service kit no. <sup>1</sup>	Nozzle holder type
48-4410	61	105048-4410	105118-7831 [ME203961]		105019-1240	KBL2.4-P side feed
48-4410	61	105048-4410	105118-7832 [ME203961]		105019-1240	KBL2.4-P side feed
48-4410	61	105048-4410	105118-7833 [ME203961]		105019-1240	KBL2.4-P side feed
48-4410	71	105048-4410	105118-8100 [ME190694]		105019-1300	KBL2.4-P side feed
48-4410	99	105048-4410	105118-8050 [ME190299]		105019-1280	KBL2.4-P side feed
48-4410	99	105048-4410	105118-8051 [ME190299]		105019-1280	KBL2.4-P side feed
48-4411	61	105048-4411	105118-7834 [ME203961]		105019-1240	KBL2.4-P side feed
48-4440	72	105048-4440	105118-8020 [ME190861]		105019-1310	KBL2.4-P side feed
48-4441	73	105048-4441	105118-8021 [ME191379]		105019-1310	KBL2.4-P side feed
48-4441	73	105048-4441	105118-8022 [ME191379]		105019-1310	KBL2.4-P side feed
48-4470	C	105048-4470	105118-8260 [---]		105019-1330	KBL2.4-P side feed
48-4520	A	105048-4520	105118-8350 [1G414-53001]		105019-1530	KBL2.4-P side feed
48-4520	A	105048-4520	105118-8351 [1G414-53001]		105019-1530	KBL2.4-P side feed
48-4520	B	105048-4520	105118-8352 [1G414-53002]		105019-1530	KBL2.4-P side feed

Note: \* The number in brackets [ ] is the manufacturer's part number.

1. Use the nozzle service kit for nozzle replacement of KBL2.3-S, KBL2.4-S and KBL2.4-P type nozzle holders.  
Never replace only the nozzle itself of these types.